

A World in Transition – Approaching the Evolutionary Eventhorizon



Global Consciousness
Project Workshop –
June 2002

Charles Ostman

Senior Fellow

Institute for Global Futures

2084 Union Street San Francisco, CA 94123

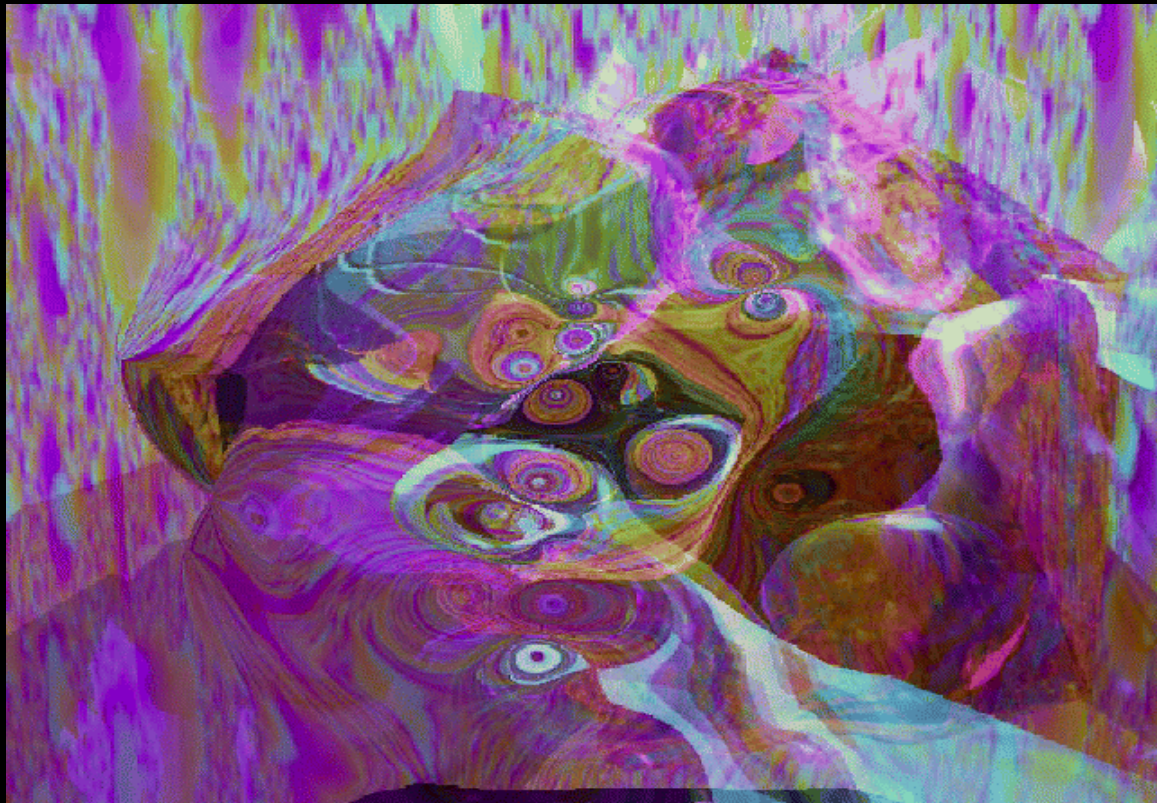
tel 510 549 0129 email charles000@aol.com

<http://www.technofutures.com/charles1.htm>



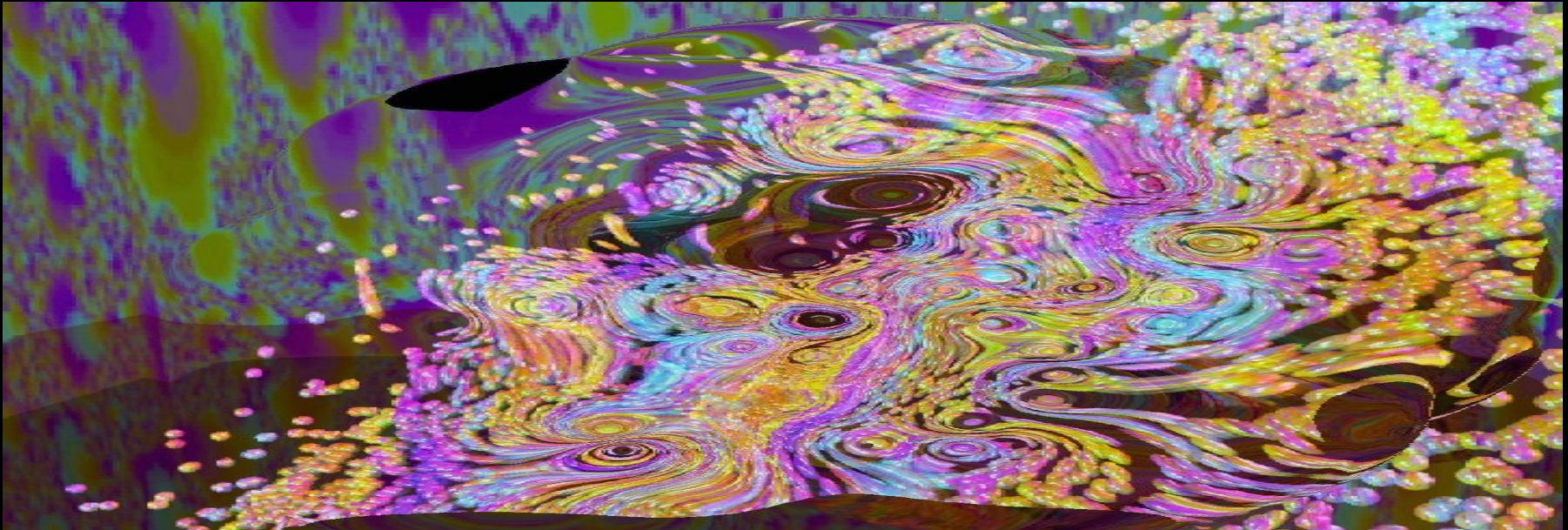
Probing The History of the Future - Evolution Into the New Millennium

- Technology Convergence
- Cultural Morphology
- Economic Drivers
- Belief Systems

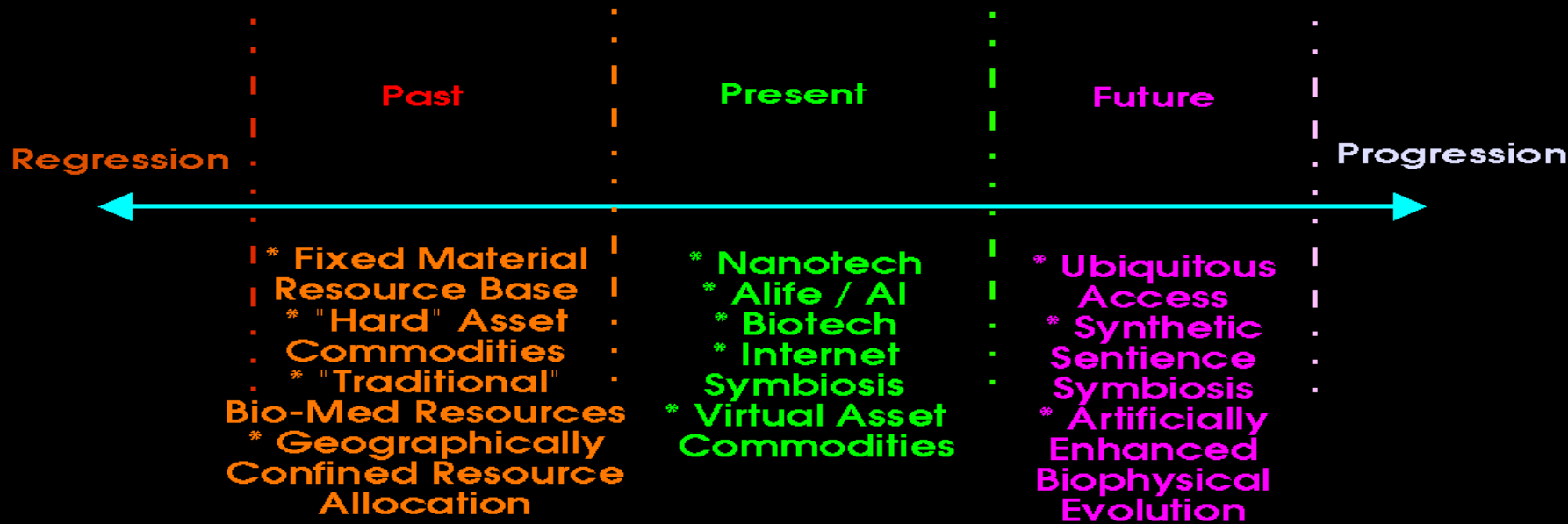


Evolutionary Process Dynamics

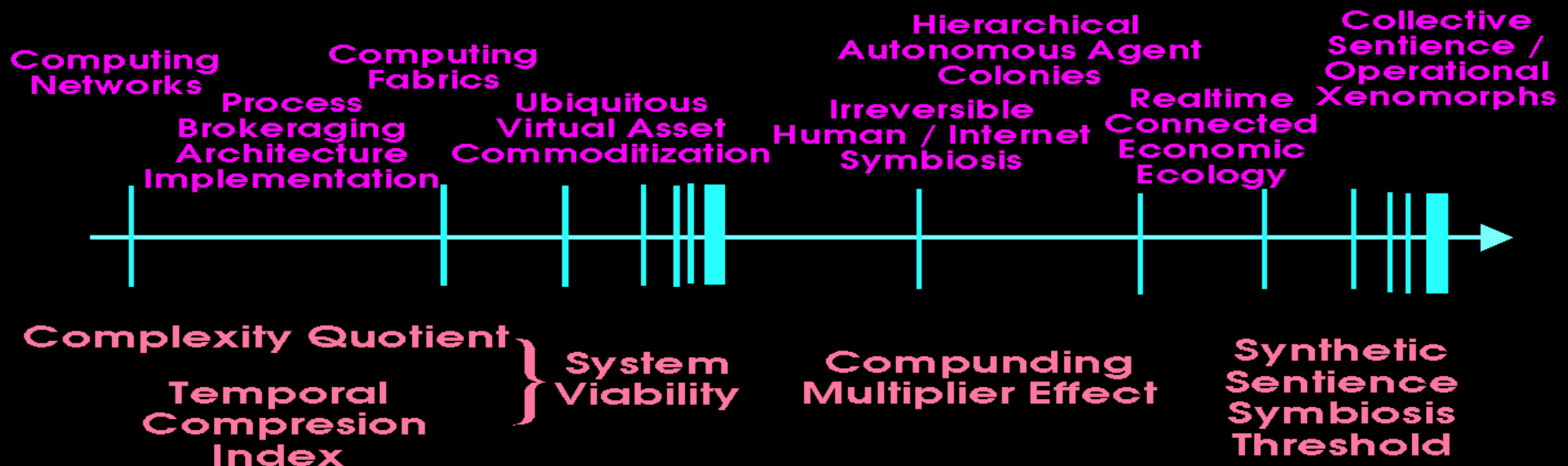
- Evolution tends to be a trauma induced process
- Fractal system model - operates at all scales, from the individual, to the collective, entire systems
- Provided the periodicity and amplitude of trauma cycles do not exceed the system capacity to respond, the system tends to evolve to a more robust form



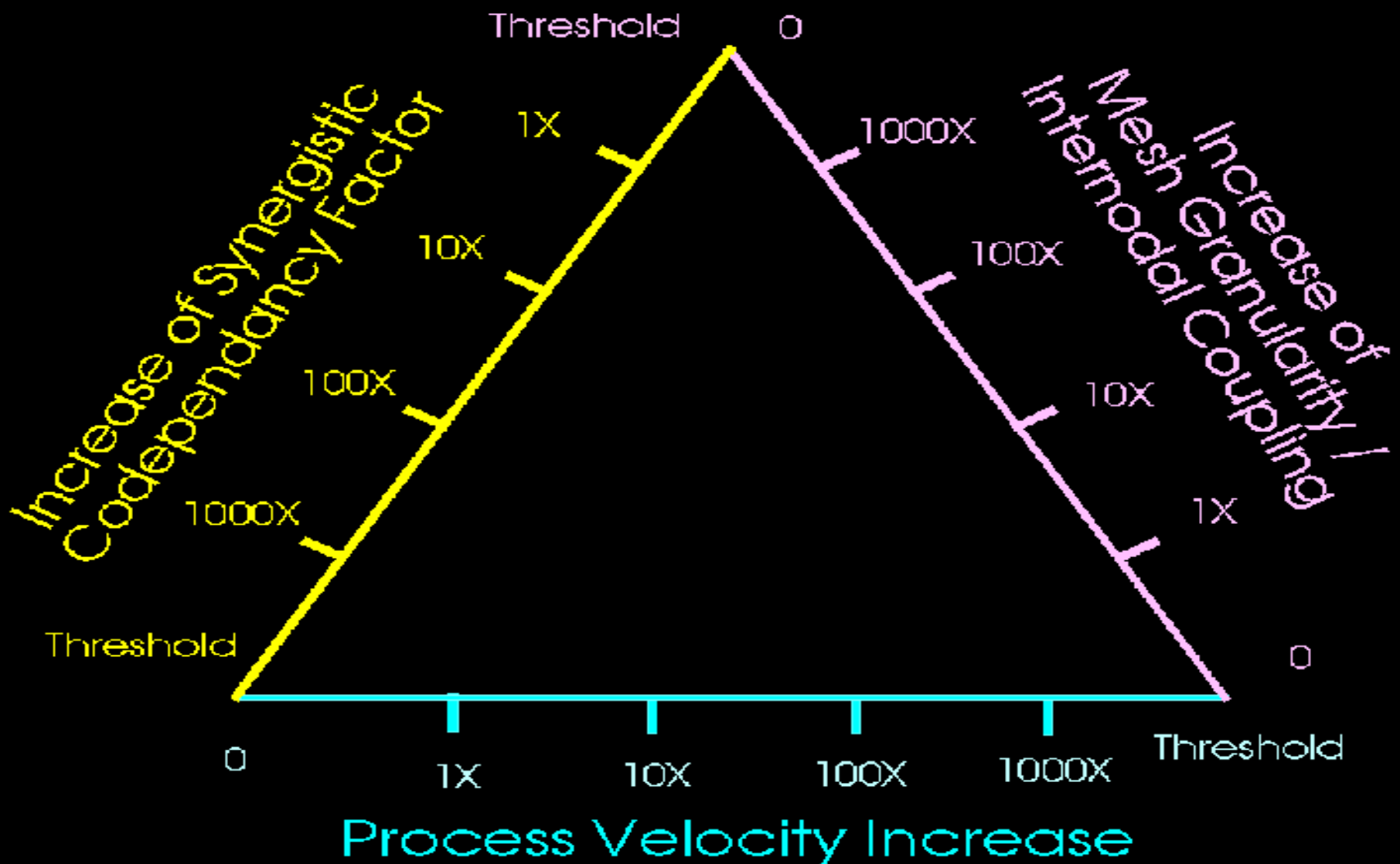
Technology Driven Socio-Anthropological Evolutionary Threshold Domains



Evolutionary Eventstream Seminal Markers



Convergence Syndrome Triad



The diagram features a central title, "Process Elements of the Convergence Syndrome", rendered in a large, bold, green serif font with a white outline. This title is surrounded by four magenta circles, each containing a text element in a blue serif font. The circles are positioned at the top-left, top-right, bottom-left, and bottom-right. The background is a dark, swirling pattern of red and purple lines, creating a sense of motion or convergence.

**Process
Acceleration**

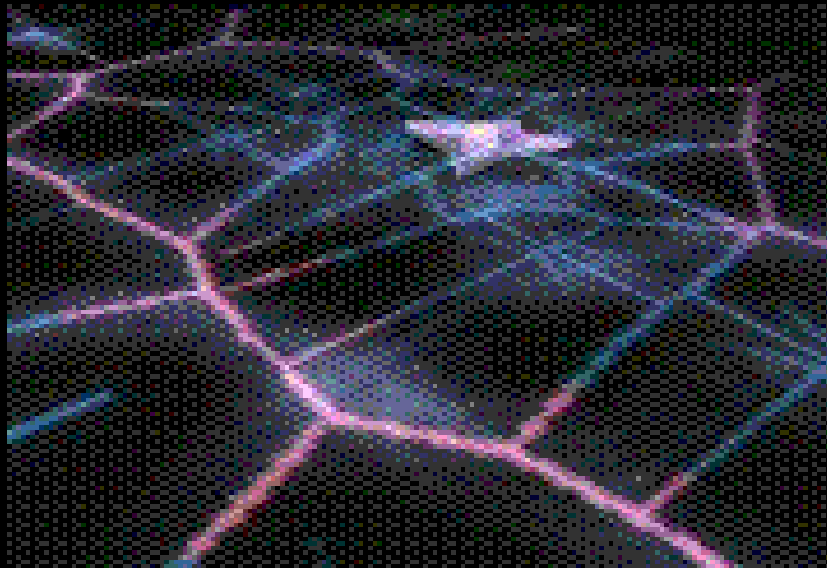
Complexity

Process Elements of the Convergence Syndrome

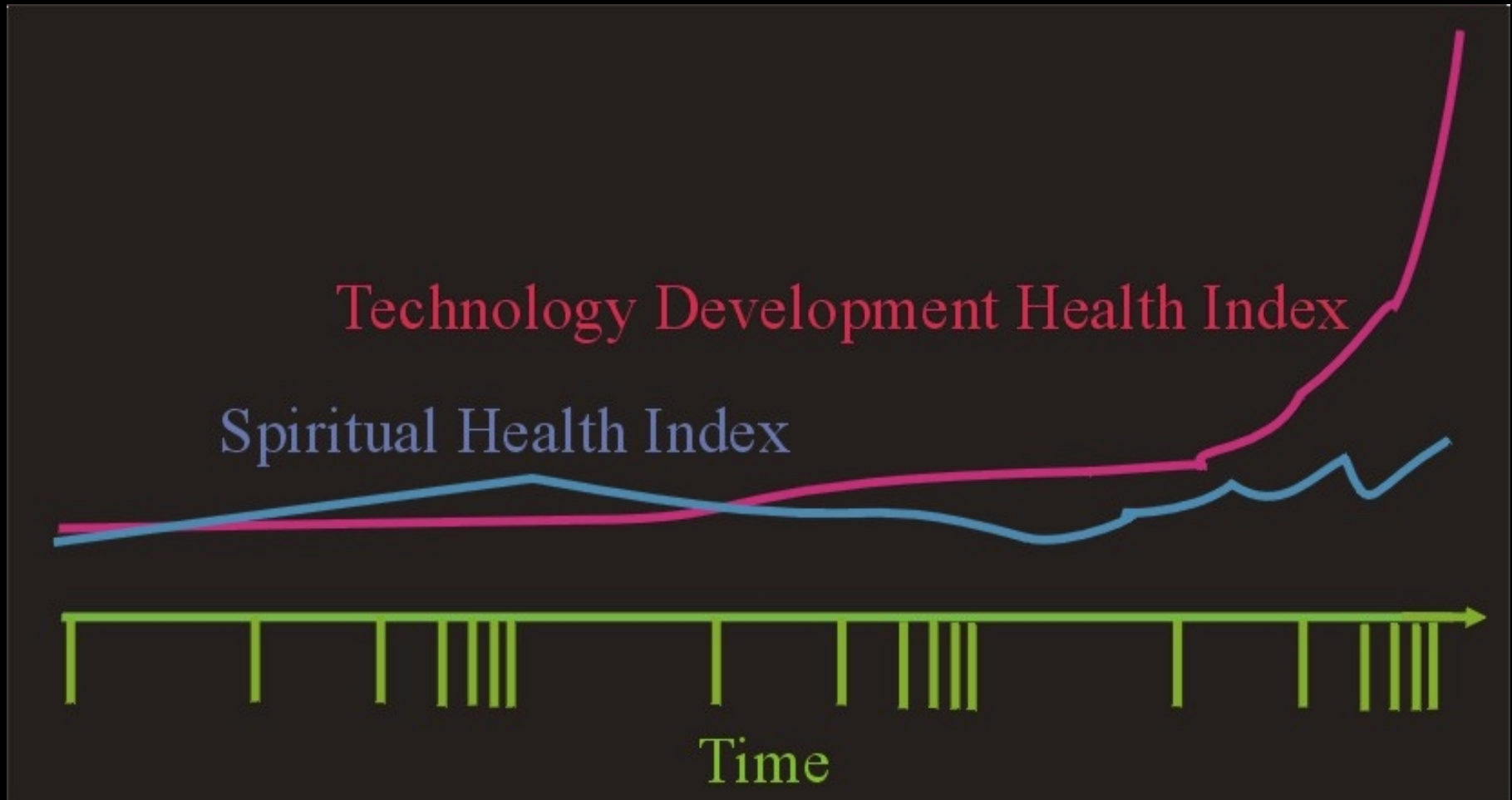
**Time
Compression**

Connectedness

The Ubiquitous Synthetic Sentience Process Manifold



Divergence of Socio-technical / Spiritual Health Indices



Major Evolutionary Eventstream

Process Dynamics and Drivers

- Realtime interconnected *economic ecologies*
- Epicenters of value indexed by *virtual commodity assets*
- Mass spawning of *biological metaphors in computing*
- Irreversible *human / internet symbiosis threshold*
- Inception of the *molecular manipulation value chain*
- Emergent *sovereign knowledge domains*
- Dissolution of *organic / synthetic domain boundaries*
- Hybrid forms of consciousness – *access to the “quantum foam”*

METABOLIC PATHWAYS

Computers

Networks

Primary elements

Carbohydrate
Metabolism

Nucleotide
Metabolism

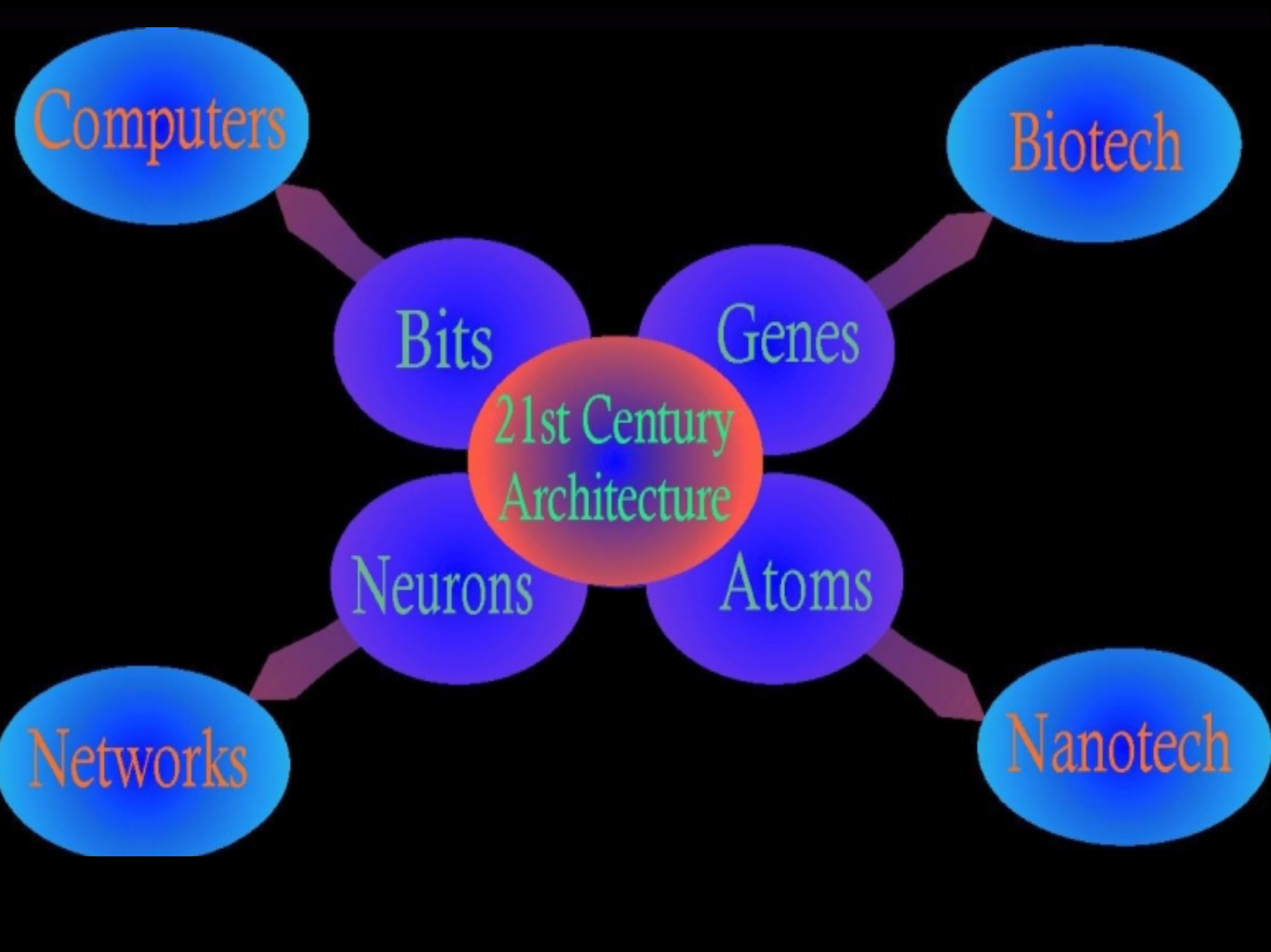
Biotech

of the emergent
operational
ecology

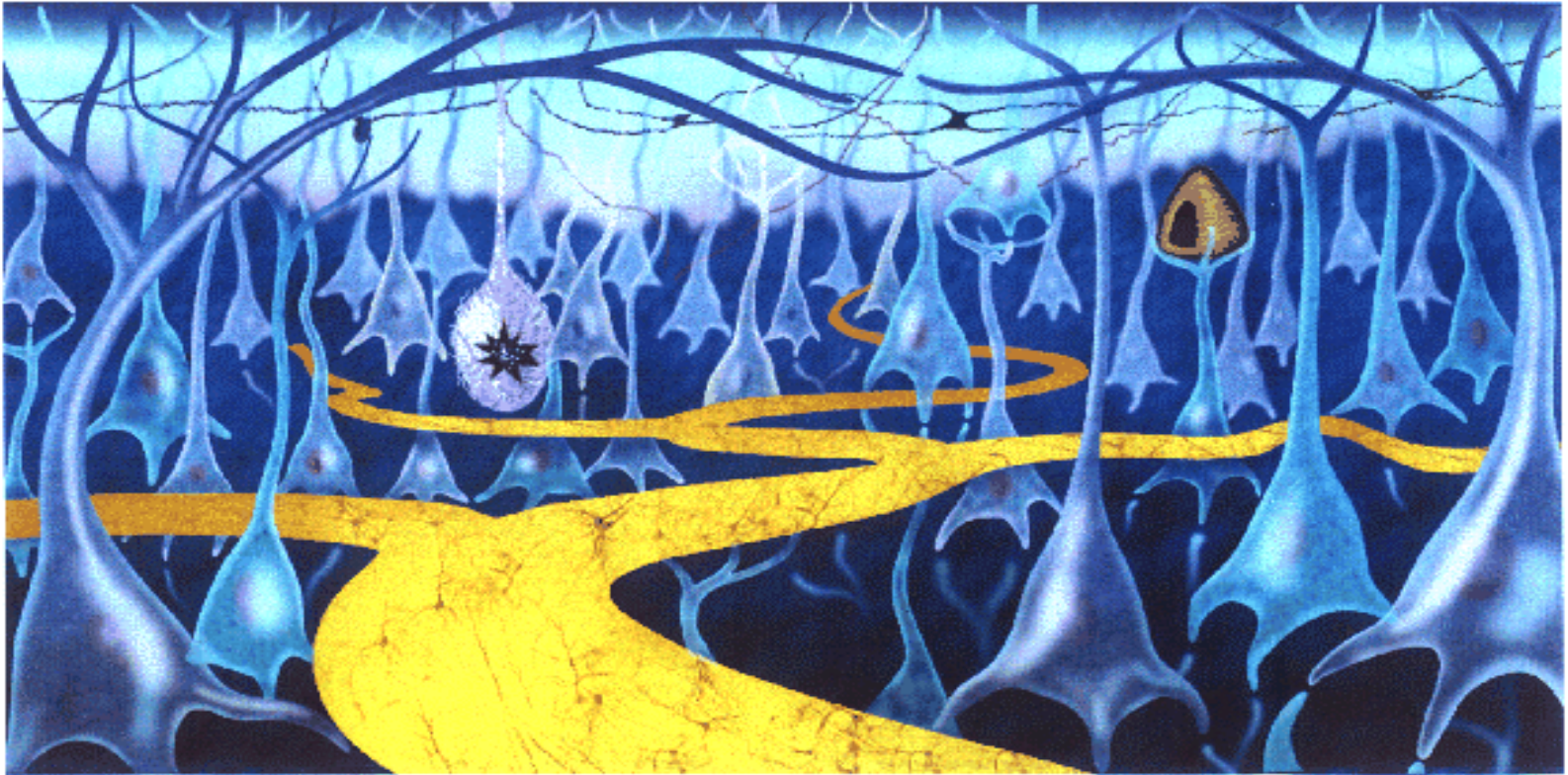
Nanotech

Energy
Metabolism

Amino Acids
Metabolism

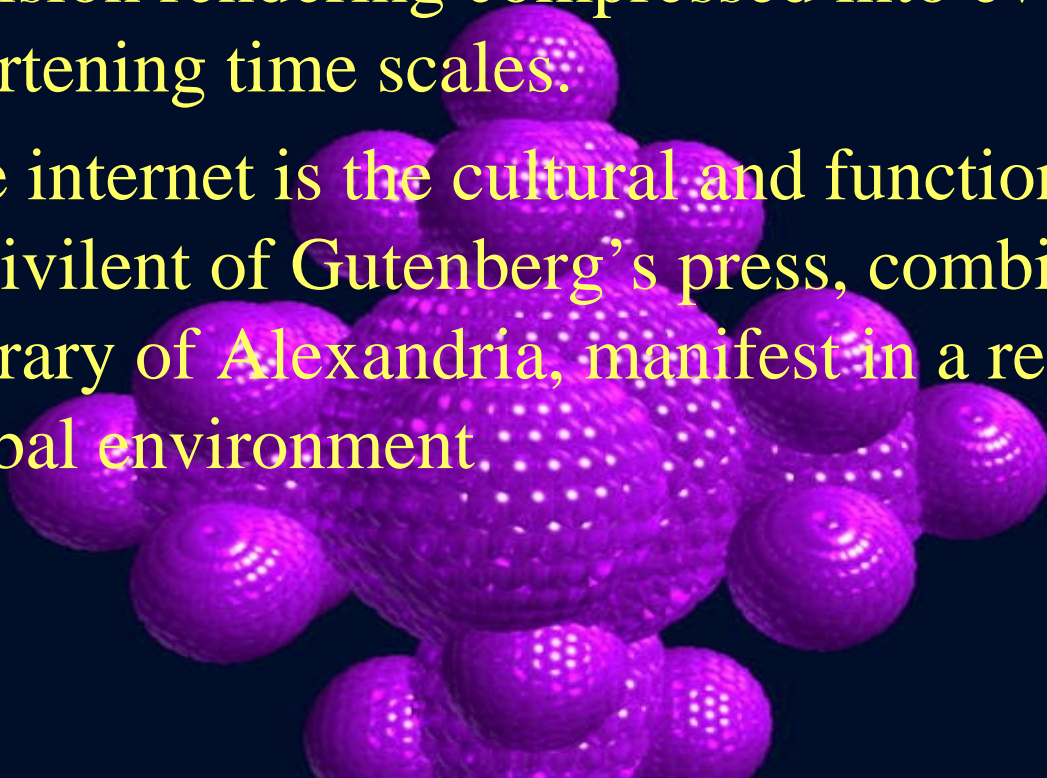


Contextual Cognition in the Emergent Operational Ecology > Hyperdimensional Existence Navigation

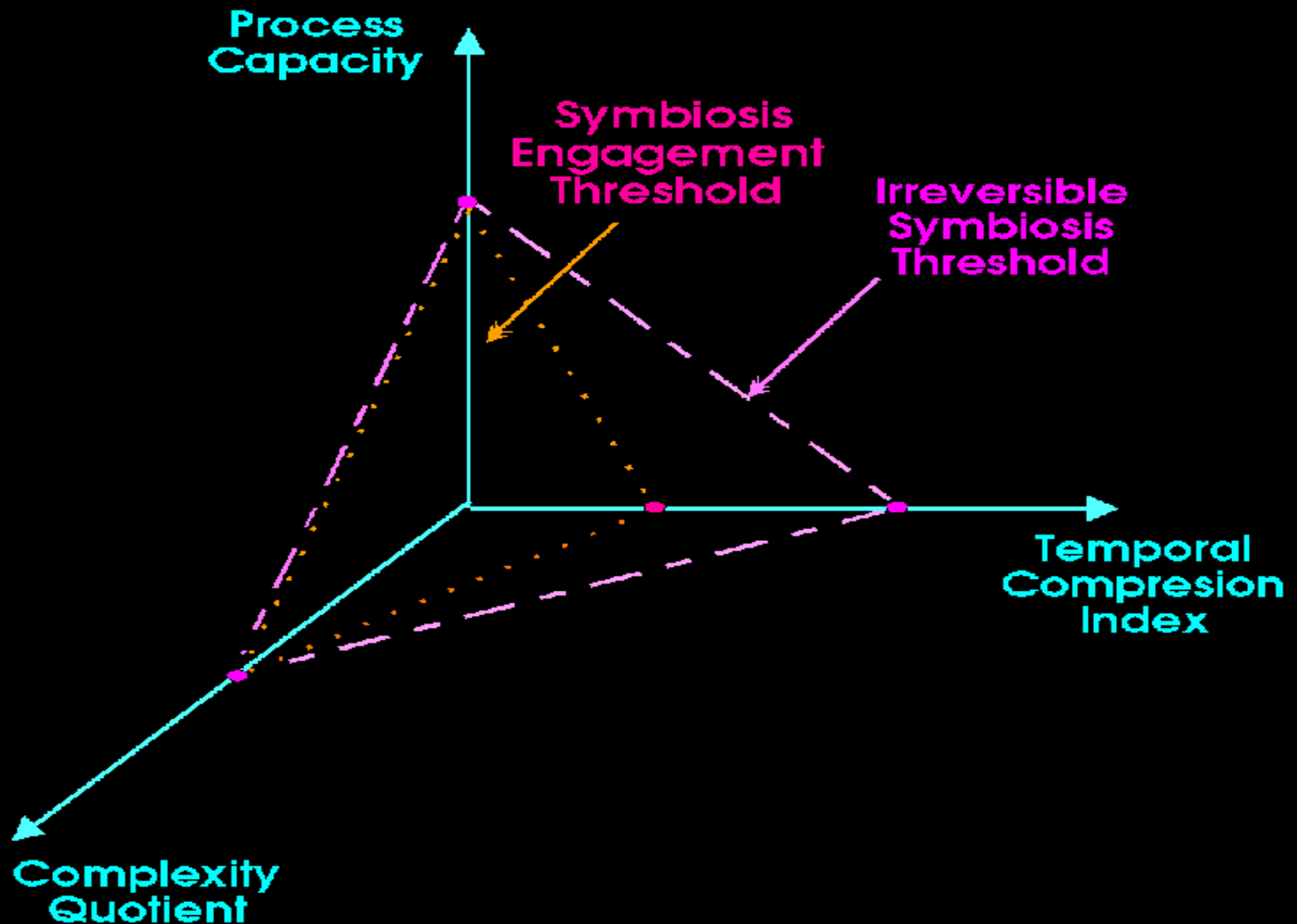


Cultural Imperatives

- Knowledge complexity, scale, and velocity is exceeding human capacity for mission critical decision rendering compressed into ever shortening time scales.
- The internet is the cultural and functional equivalent of Gutenberg's press, combined with the Library of Alexandria, manifest in a realtime global environment



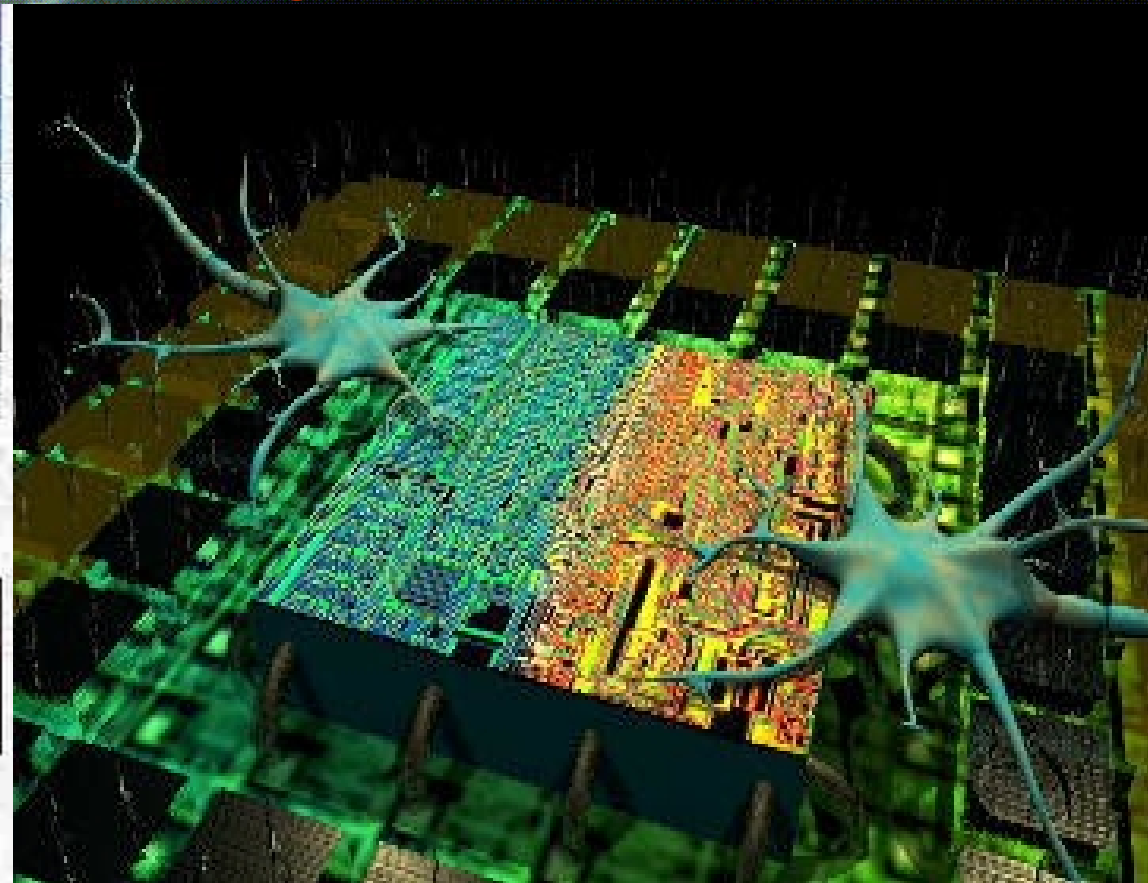
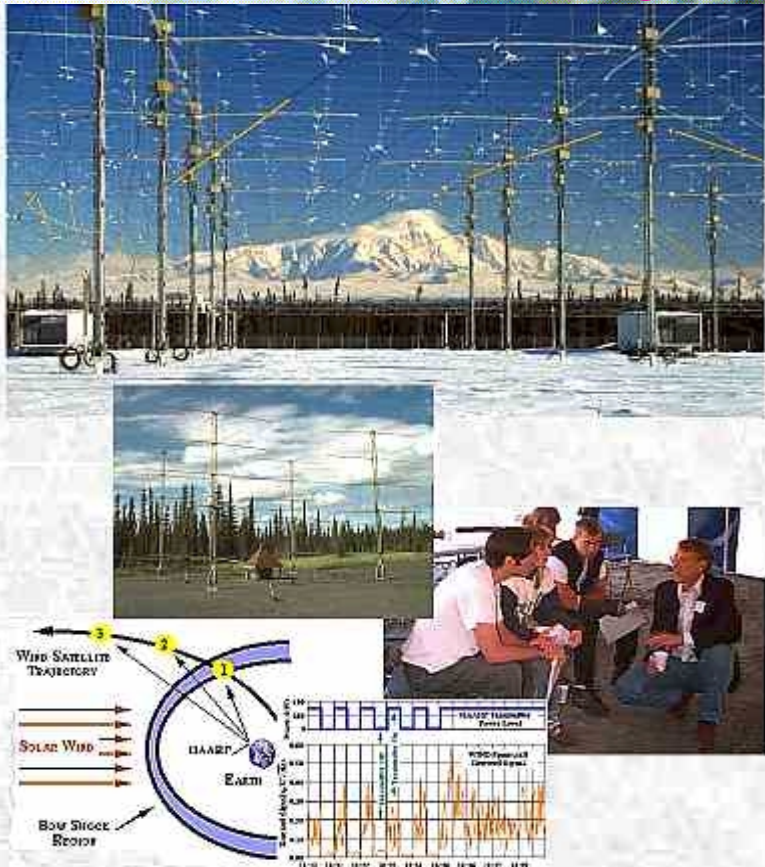
Emergent Synergistic Co-Dependency Manifold



The collective planetary gaia organism - at the next evolutionary test threshold

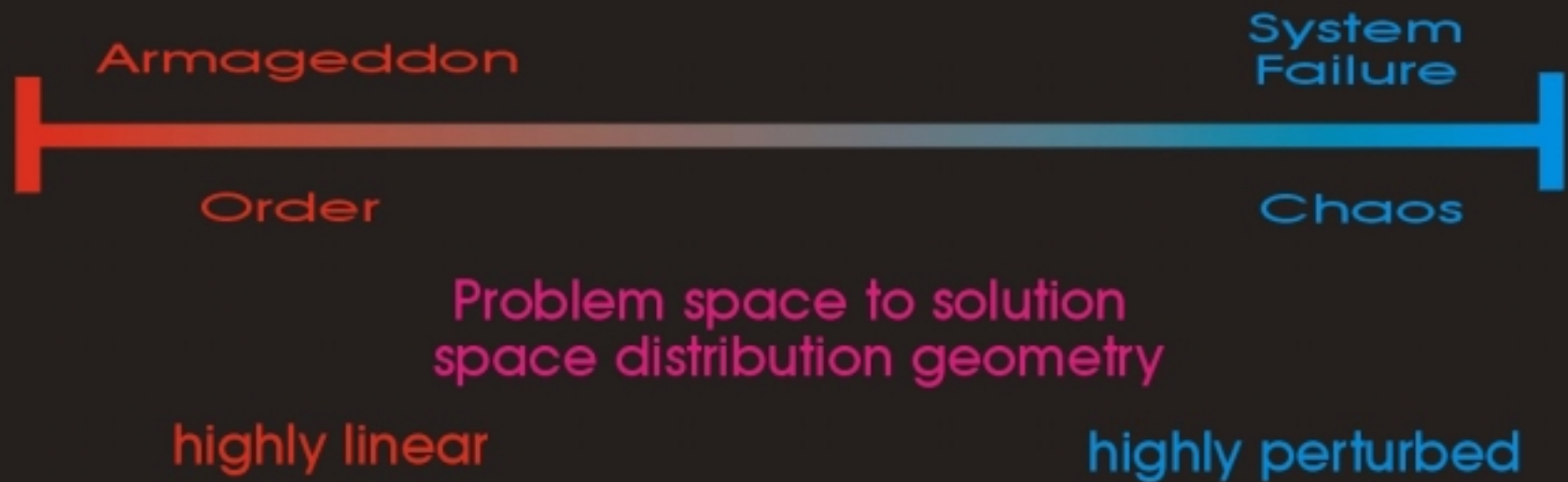
High Frequency Active
Auroral Research Program

Integrated biodevices / hybrid
organisms / artificial entities



Processes dynamics of evolutionary system failure vs. “Armageddon” trauma singularity

Evolutionary system failure is
the exact inverse of an Armageddon
meteor impact event



- Problem space to solution space interface boundary is highly perturbed
- Many to many problem space driver - perceived threat vectors are contextually interlinked, nonlinear interdependancies

Biological System Process Modalities - Implementation of GelWare Subcomponents

Self Evolving
Machines

Self Evolving
Knowledge Domains

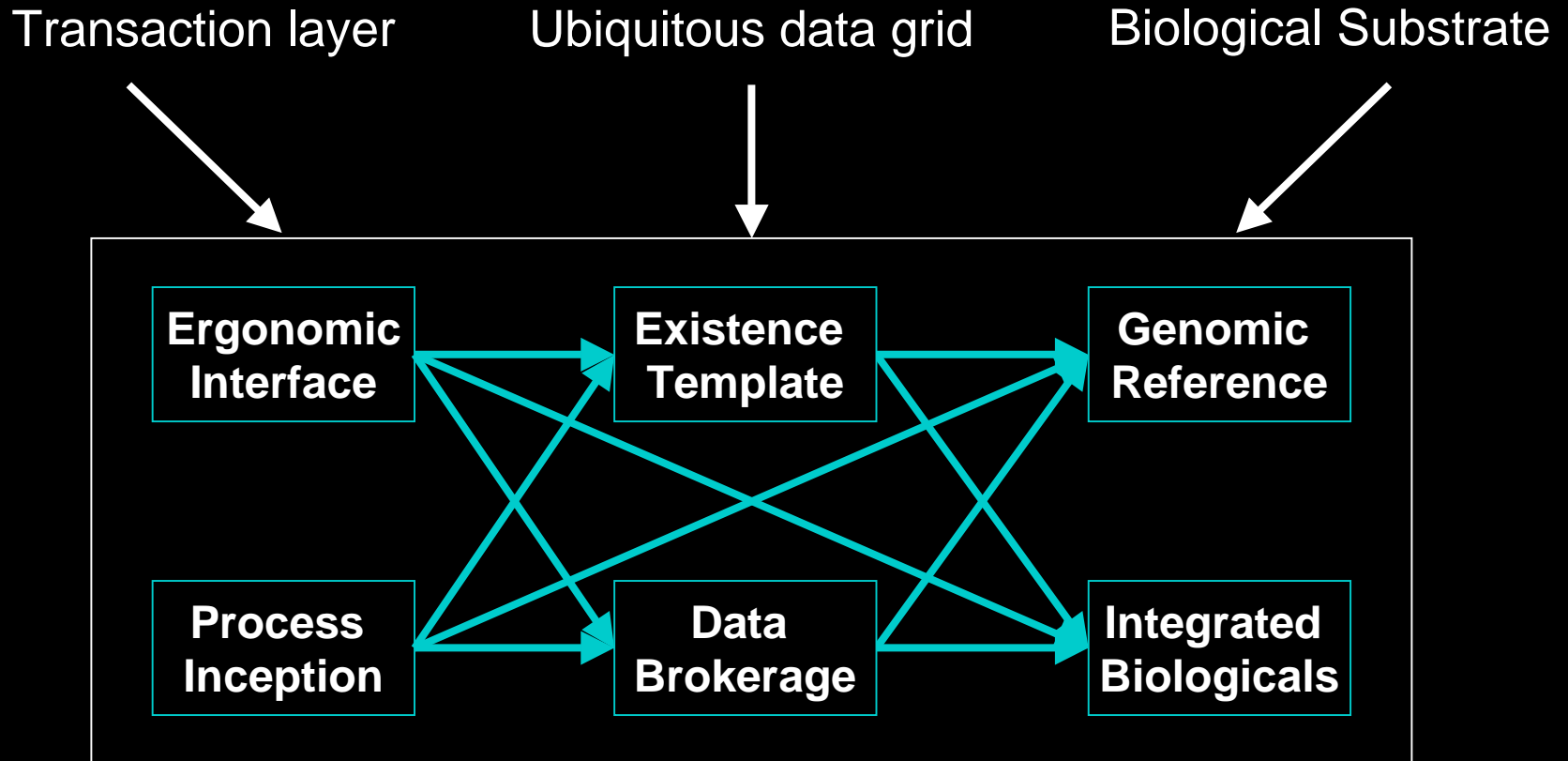
Human User
Interaction

Content Definable
Functionality Mapping

Self Organizing
Networks

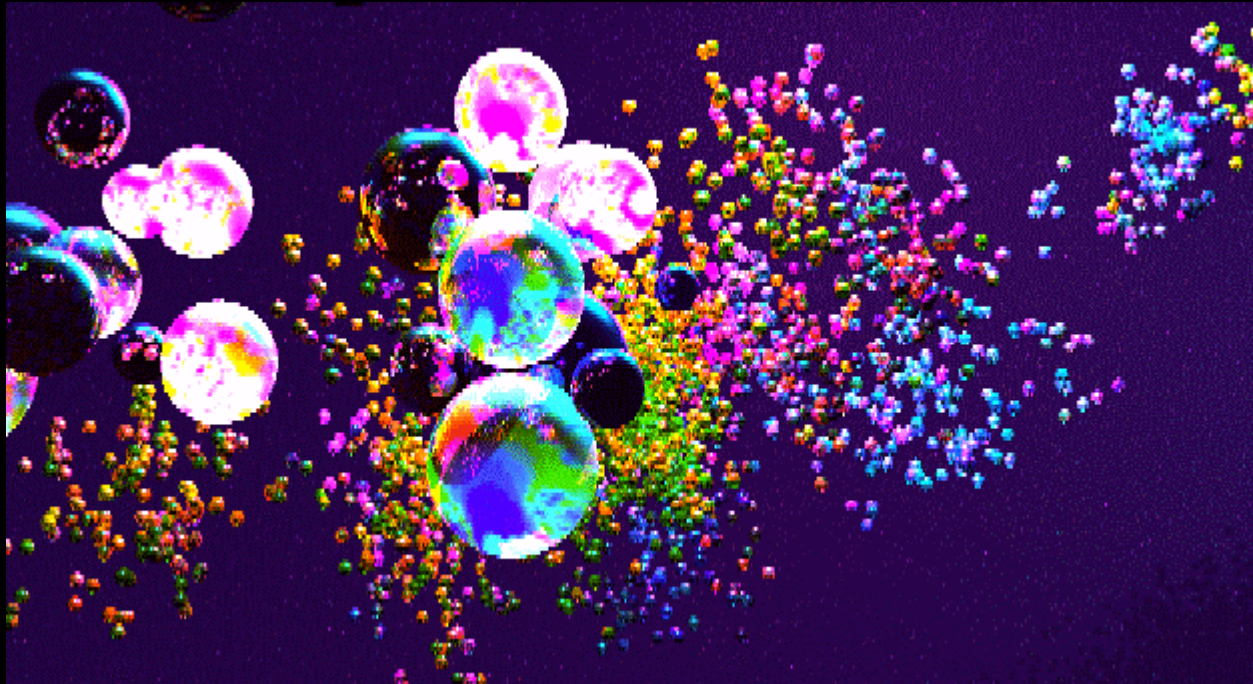
Content Addressable
Information Mapping

Existence Valuation System Architecture

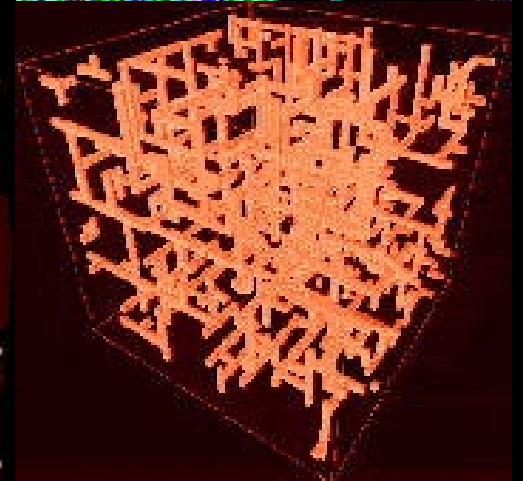
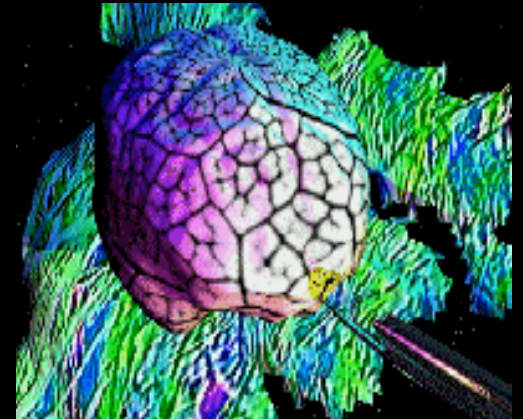
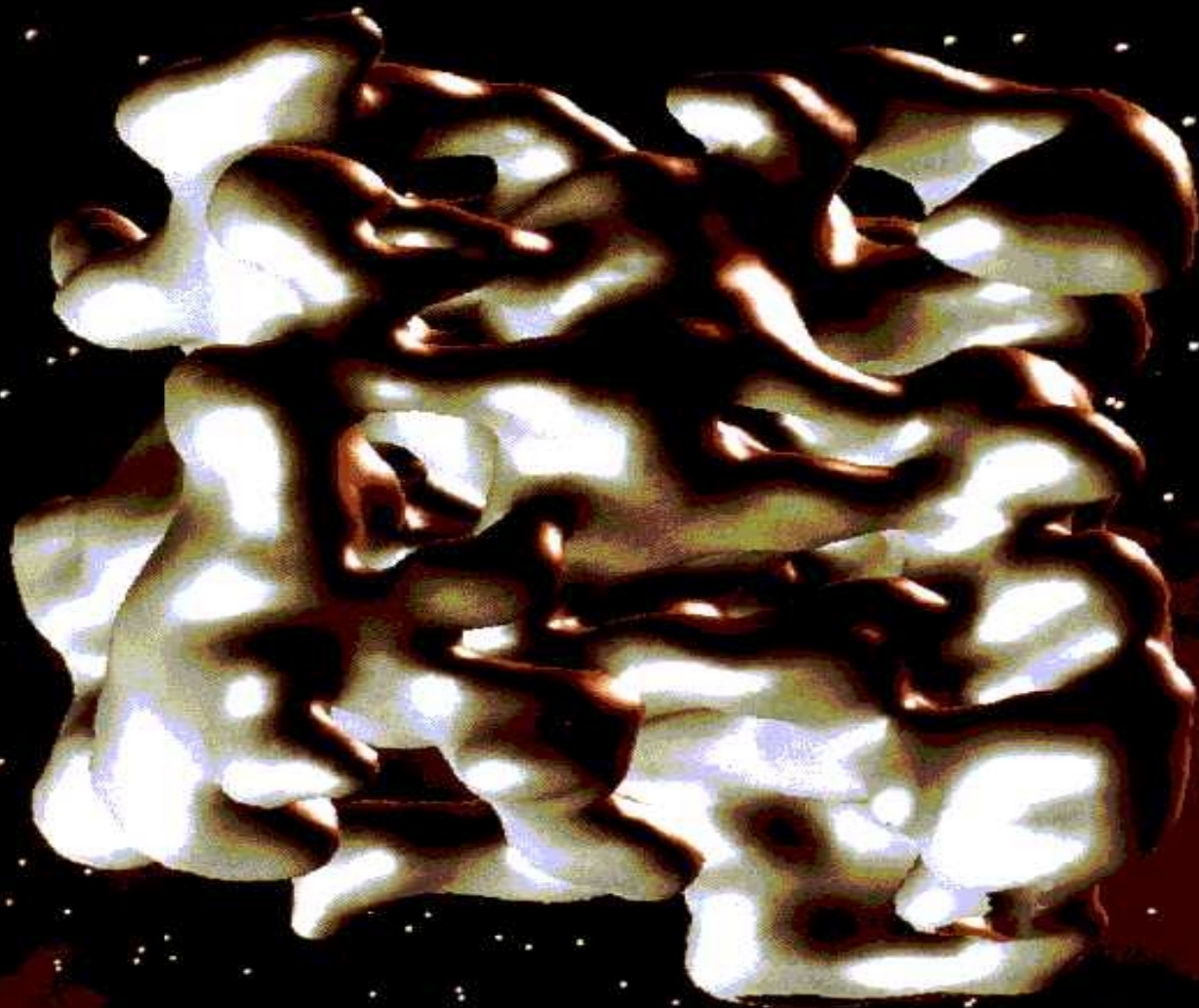


The next increment to Ubiquitous Access . . .

Hyperdimensional Access Portals

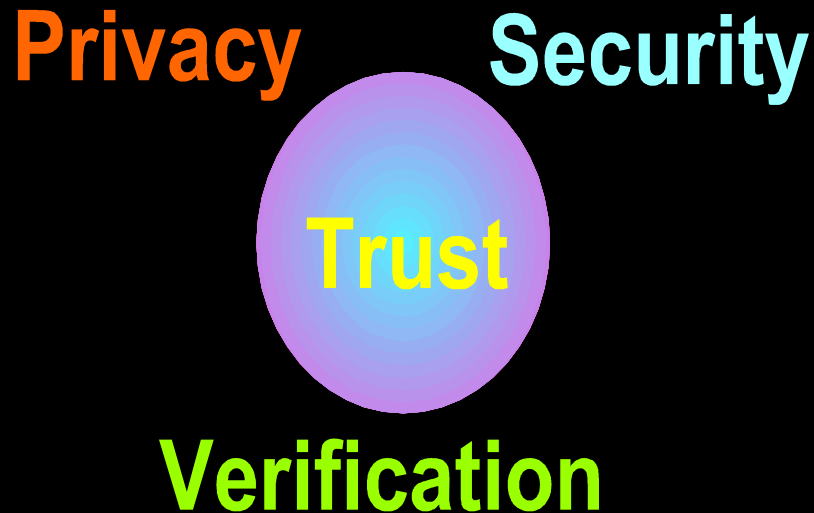


Hybrid Forms of Consciousness - Access to the Quantum Foam



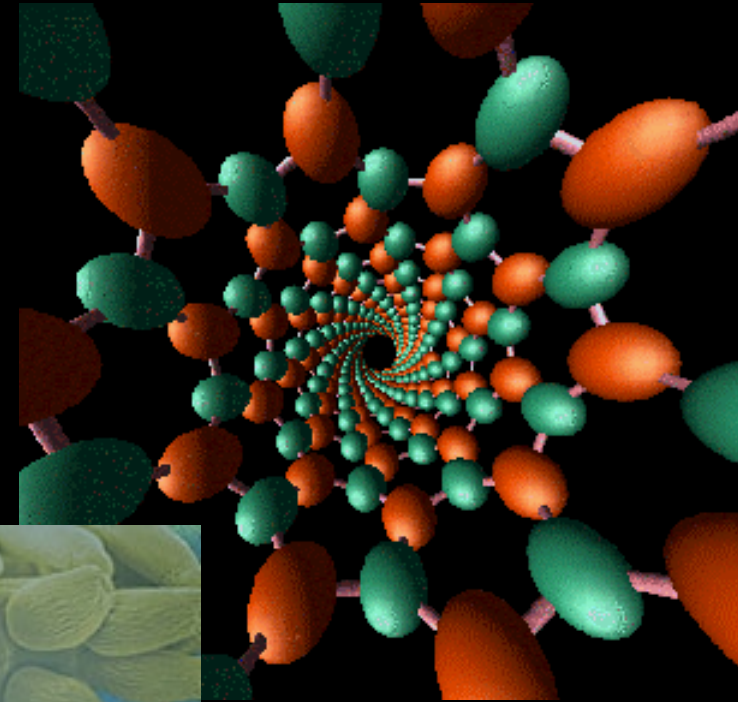
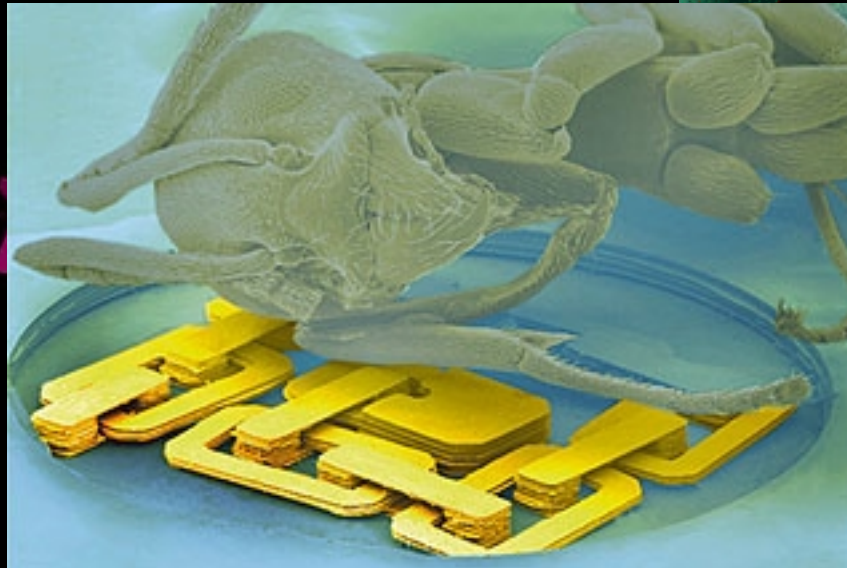
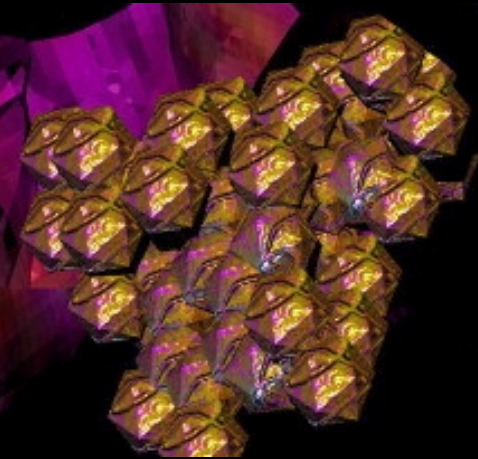
Cultural Imperatives

- Embedded Intelligences
- Integrated Lifestyle Management
- Ubiquitous Interactive Process Environment

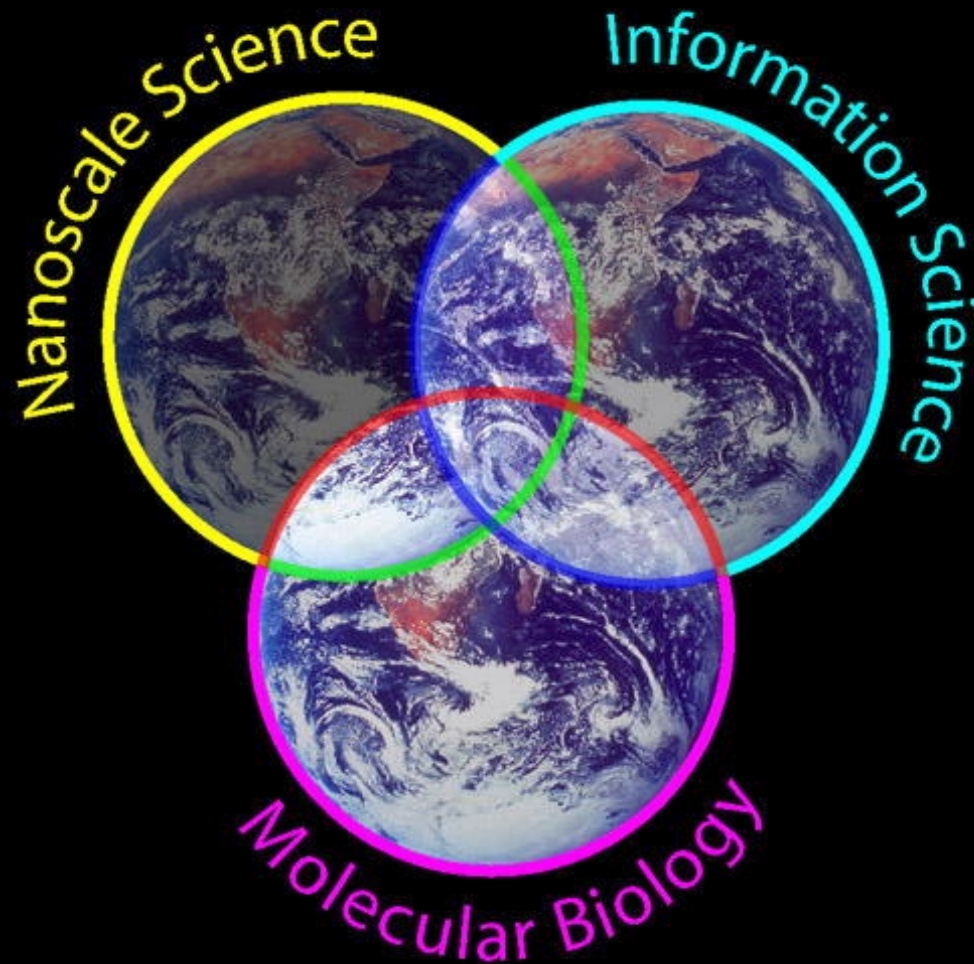


The Industrial Revolution of the New Millennium

- Technology Convergence
- Cultural Morphology
- Economic Drivers
- Belief Systems

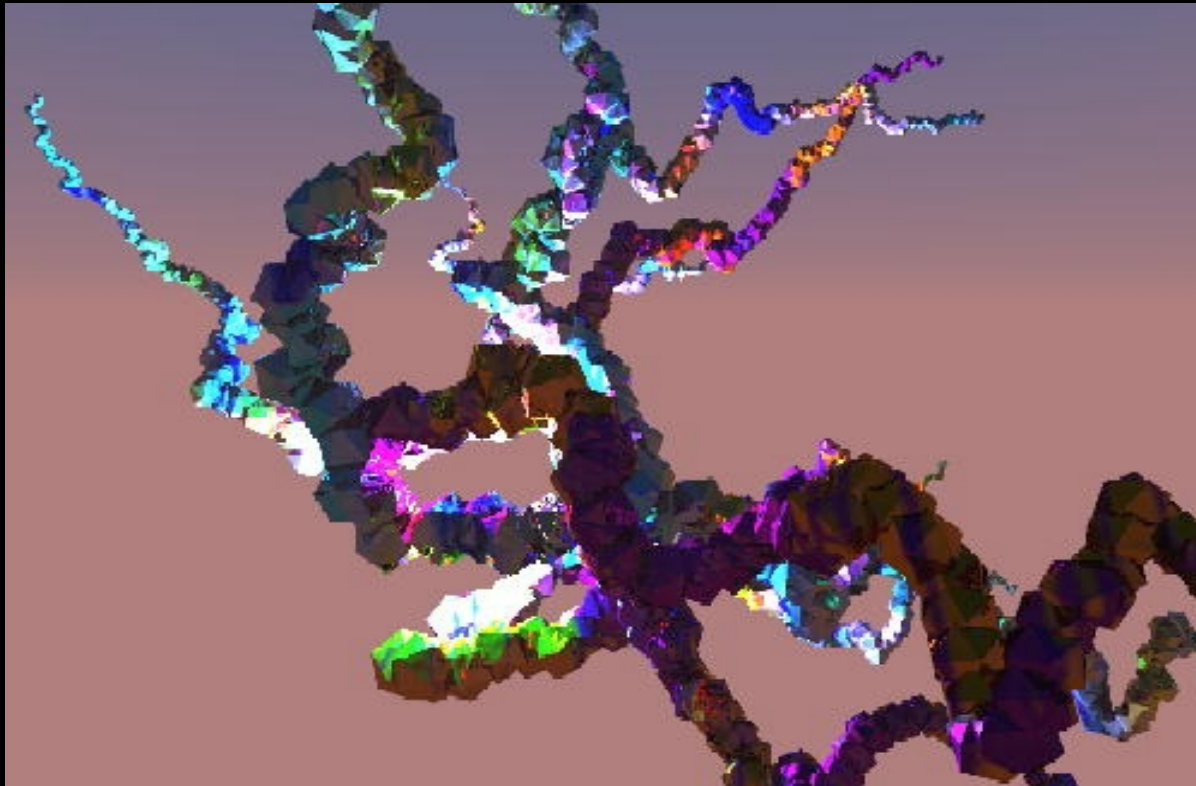


The emergent infotech / biotech / nanotech trichotomy



The Operational Ecology – Translation into Virtual Nature

- Self evolving information architectures, process platforms, knowledge ontologies
- Self assembling / self organizing molecular systems, biological and non-biological



Current processes by which the current life support capacity of the biosphere may be suppressed into eventual system level failure mode

- Highly centralized, megalithic, predatory manufacturing and industrial processes, energy systems
- Acceleration in consumption of non-renewable resources
- Irreversible alterations to ecosystems, soil, oceans, atmosphere
- Increased dispensation of hazardous materials, pathogens, mutagens
- Situational dysfunction of societies, socio-economic systems and substrates
- Highly centralized, hard asset based commodity systems decaying into irrecoverable debt vortices

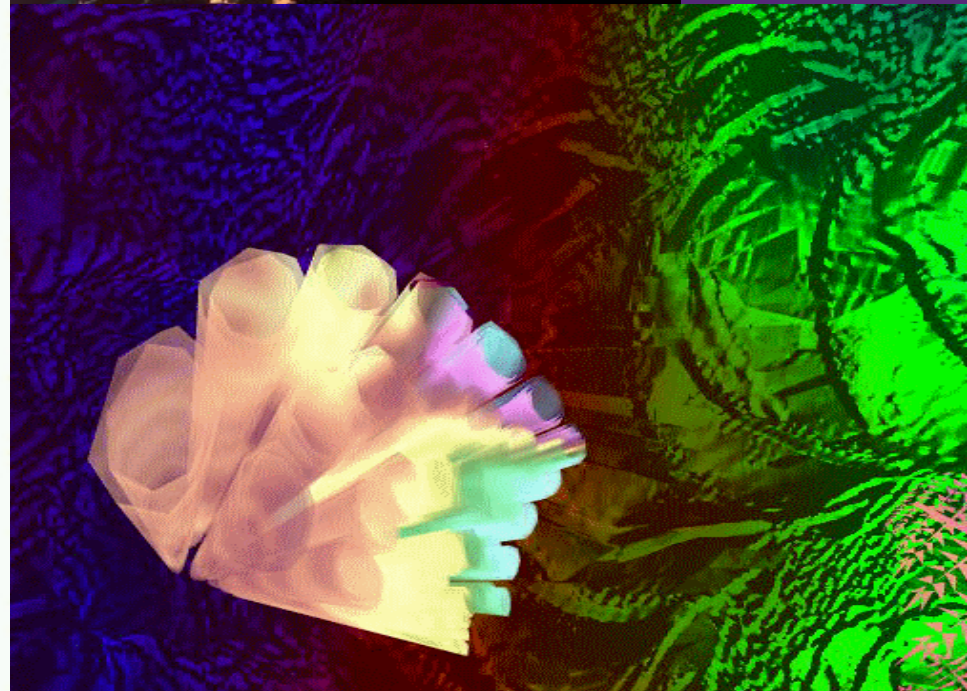
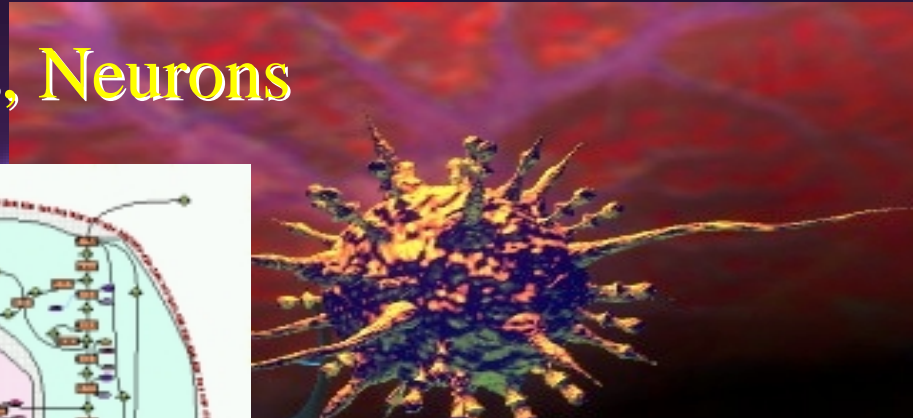
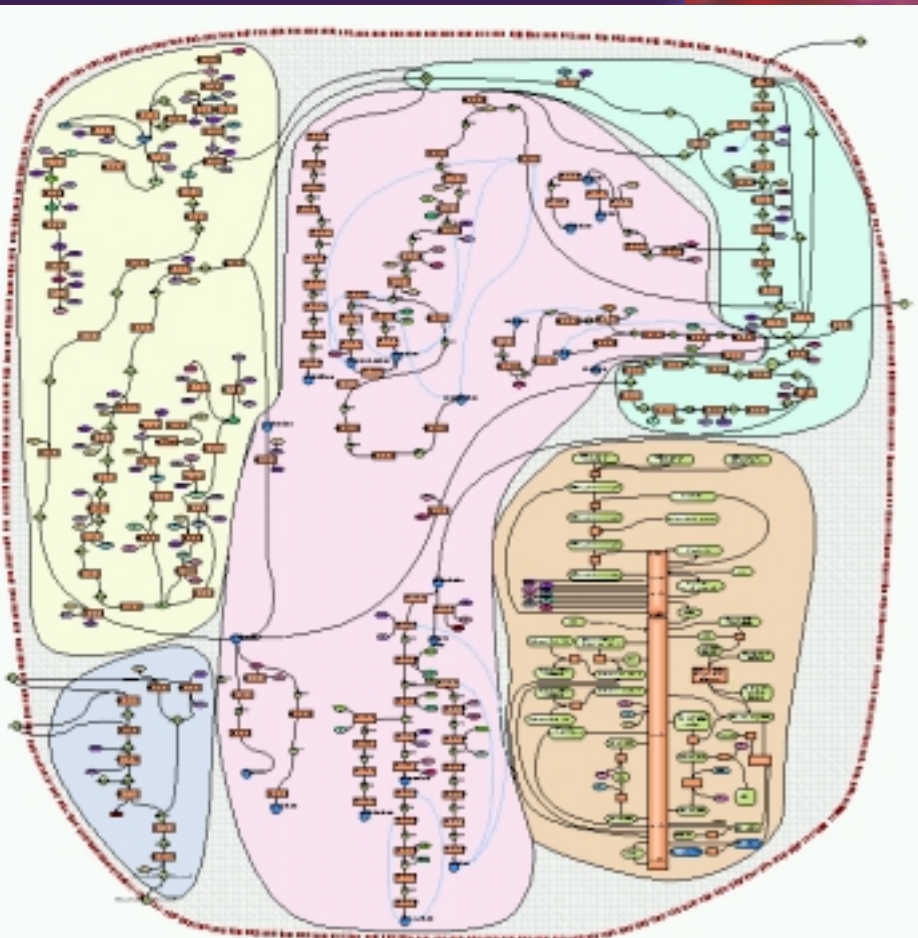
Resources and processes currently existing, or in various stages of development

- "Manufactured" synthetic life forms, pseudomorphs, quasi-organic entities
- Distributed, granular manufacturing systems, energy systems, via applied nanotechnology
- Accelerated evolution - cybernetic and genetic modification of the human body
- Synthetic sentience as a strategic resource
- Infinitely scalable computational resource
- Mind/machine interface
- Human/internet symbiosis
- Distributed virtual asset based commodity systems
- Knowledge conveyance as an experiential process

Digital Convergence >

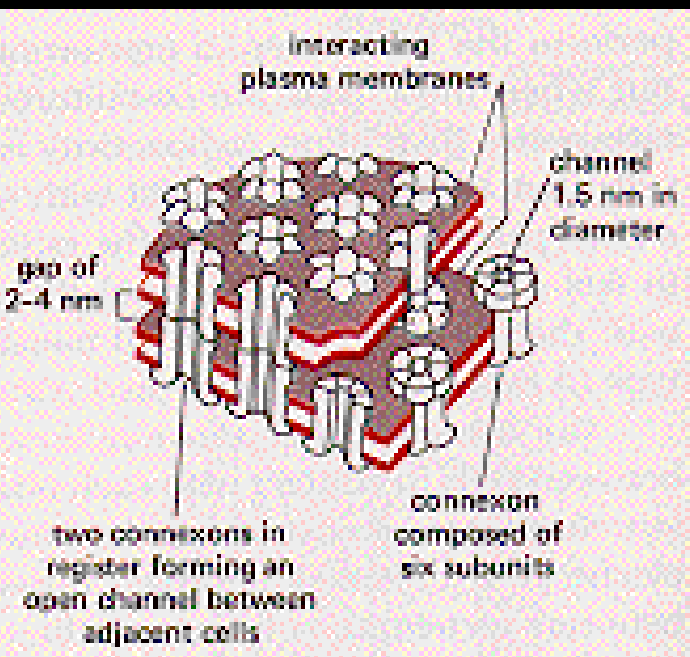
Process Convergence

Bits, Atoms, Genes, Neurons



Manufacturing Modalities at the Molecular Scale

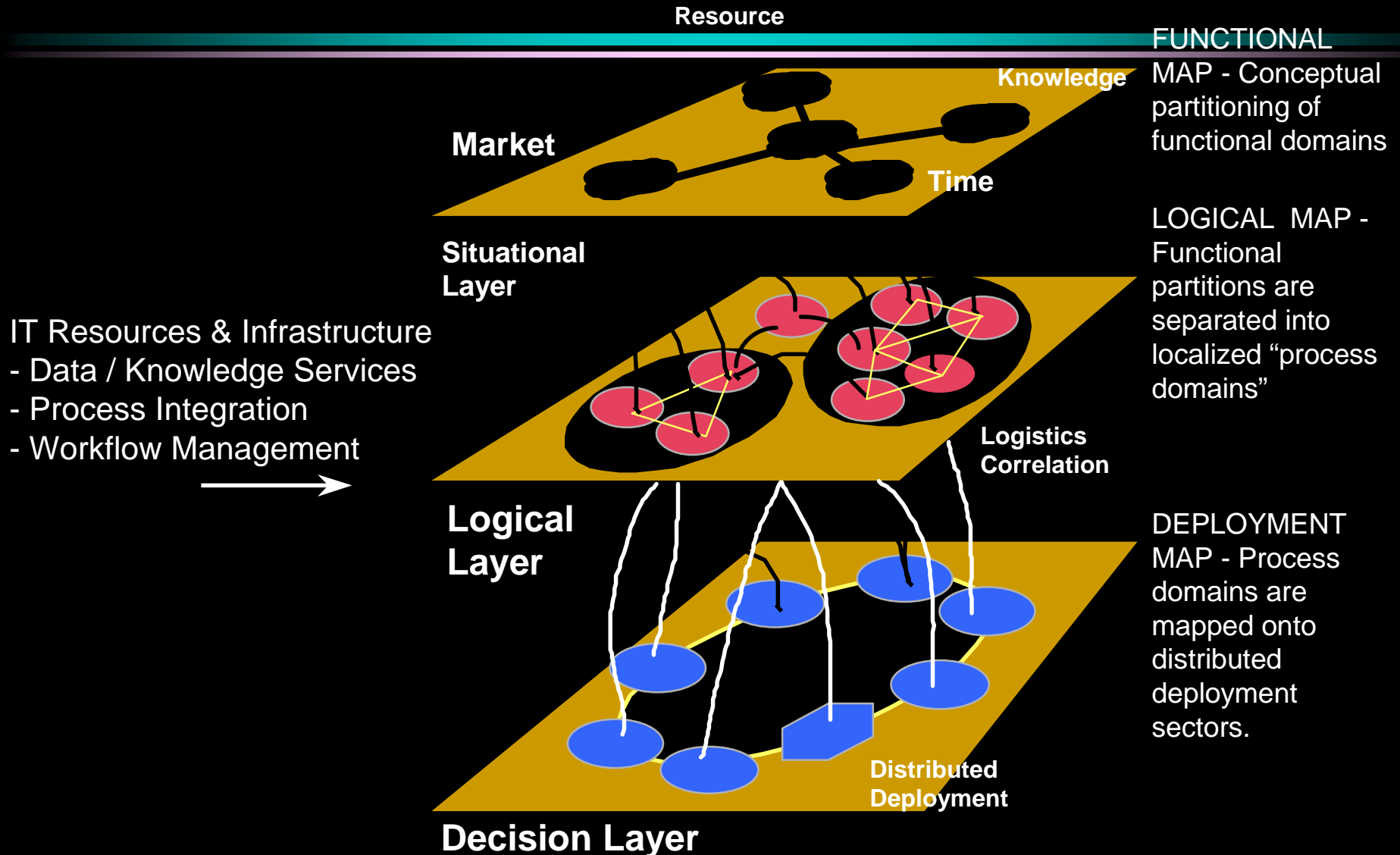
- Self Organizing / Self Assembling Membranes, Structures, Manifolds
- Hierarchical Systems
- Process Precision



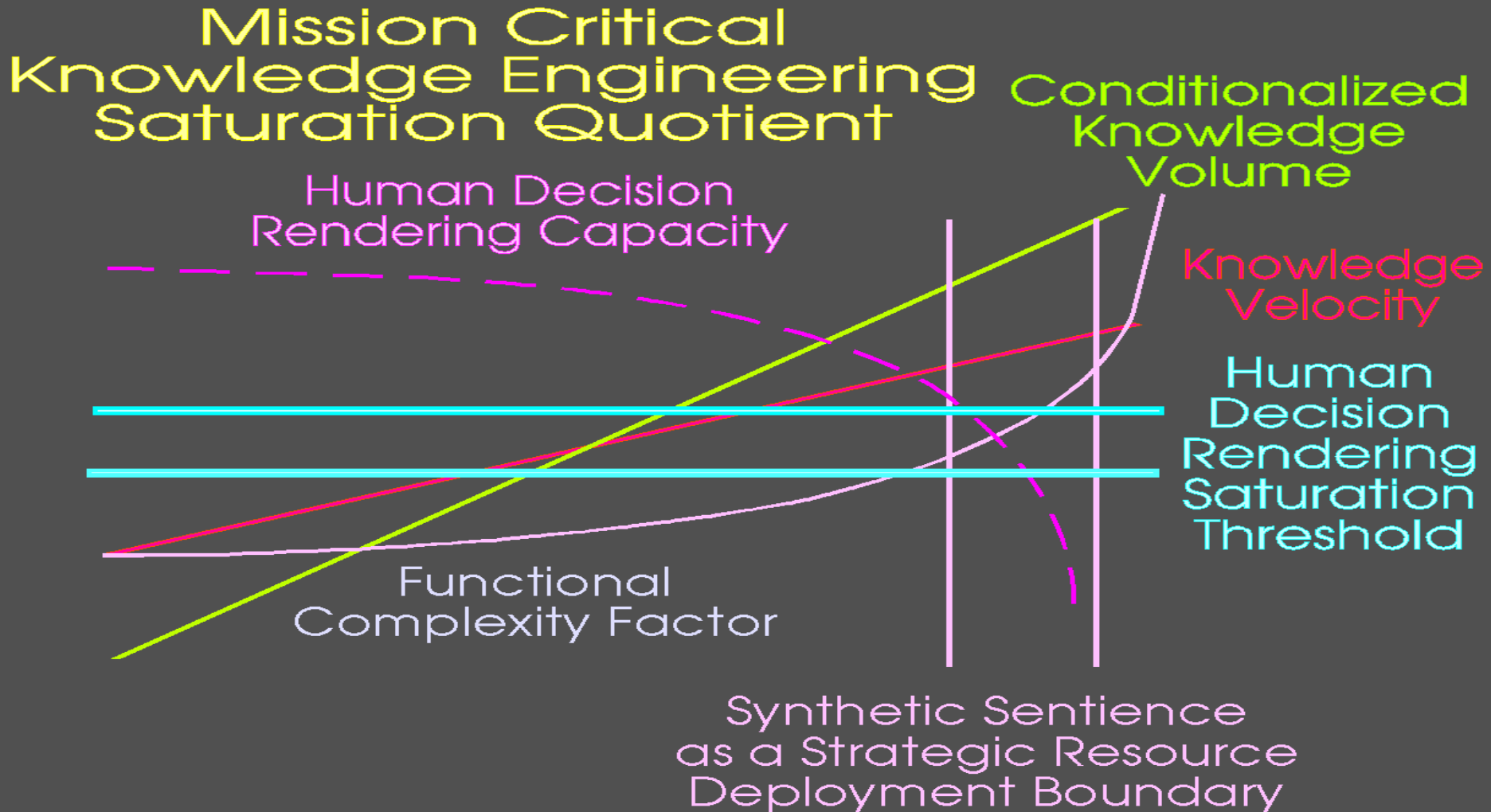
4/23/2010

	Bilayer Type	Main needs for structural integrity	Typical signal generated
Complexity hierarchy ↑	End of Organ (eg. Olfactory)	Intact Tissue Architecture	Action potential
	Tissue	Nutrient / Oxygen Supply	Metabolic end product
	Whole Cell		
	Cell Organelle (eg. Mitochondrion)	Osmotic / pH Stability	Product of electron chain
	Biomembrane (eg. Receptor)	Mechanic protection	Released contents
	Enzyme	pH / electrolyte stability	Reaction product
	Antibody	pH stability	Antigen uptake mass change
	Ionophore	Adequate retention	EMF/absorbance change (chromionphore)

Decision Rendering Process Map



Synthetic Sentience Threshold - Strategic Resource



Seminal Marker Points of the Evolutionary Eventstream

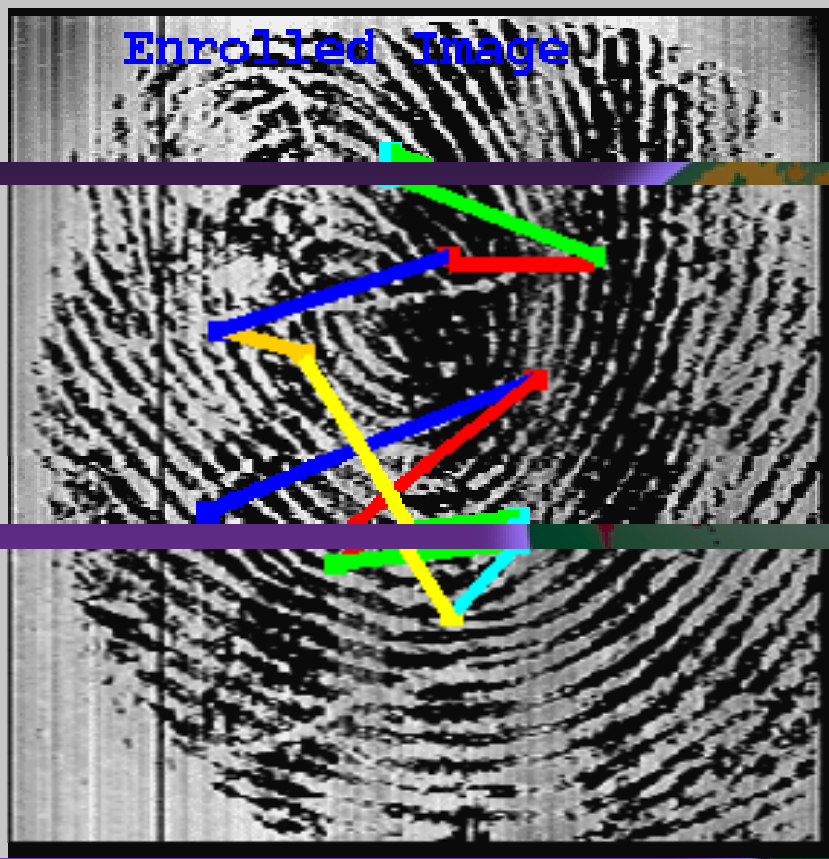
- Emergence of “synthetic entities” as a culture norm
- Peer to peer tele-existence streaming
- Hybrid biological systems integration



Ananova:

Who is she and
what makes her tick?

Biometric Recognition



Rotated -46.51 X





**“Virtual Human”
Entity Interface**



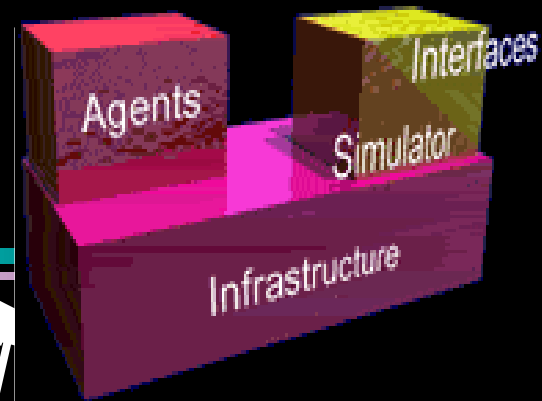
**Smart Sensors
Everywhere**



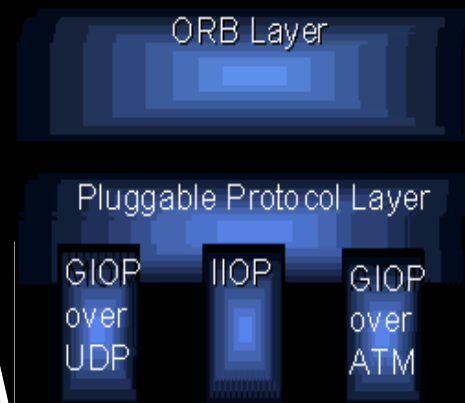
**Ubiquitous
Access Portals**



**Digital Process
Convergence**



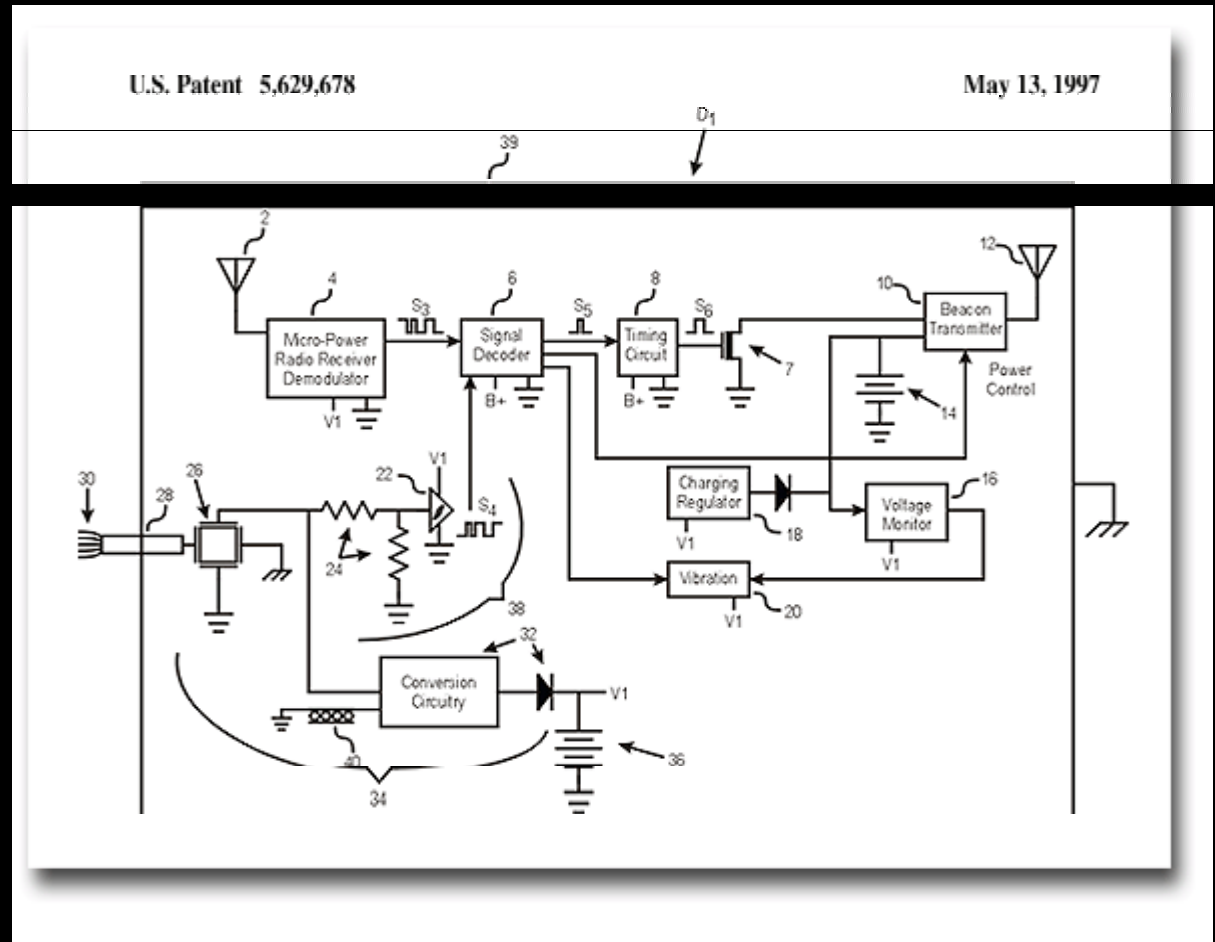
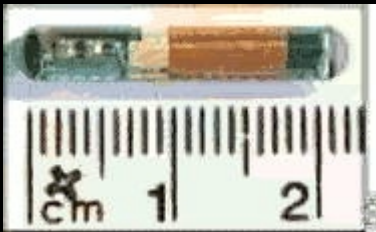
**Intelligent Agent
Hierarchies**



**Process
Brokeraging
Architectures**

Ubiquitous Immersion

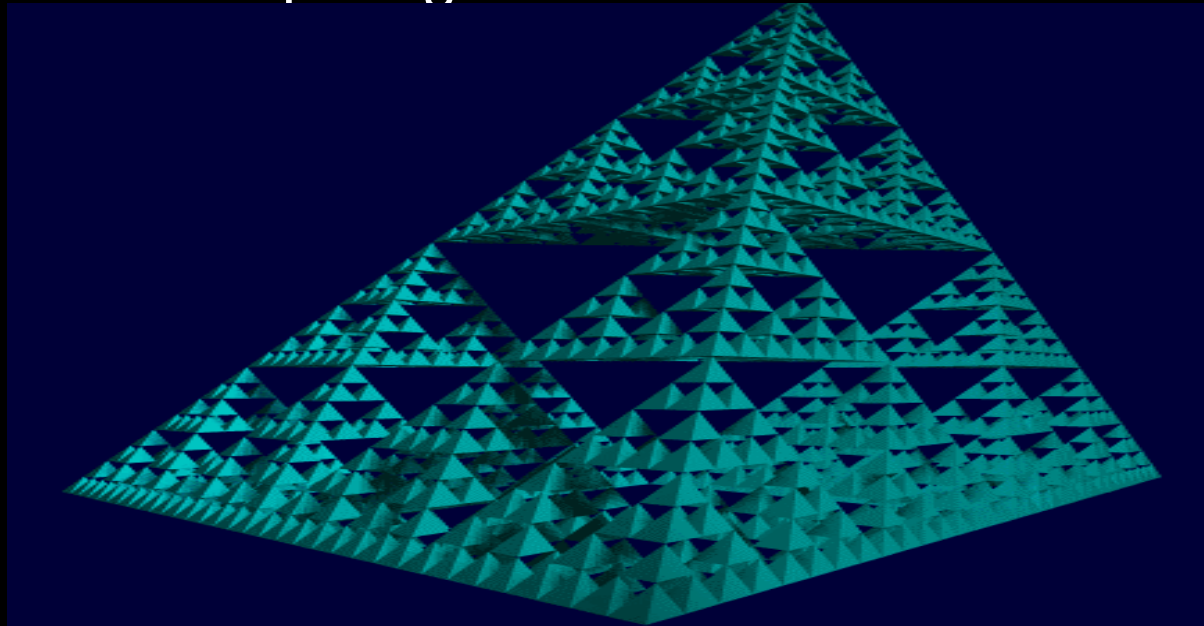
- Implantable biochip Example



Human Internet Symbiosis

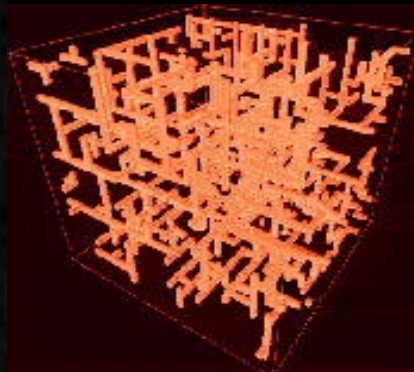
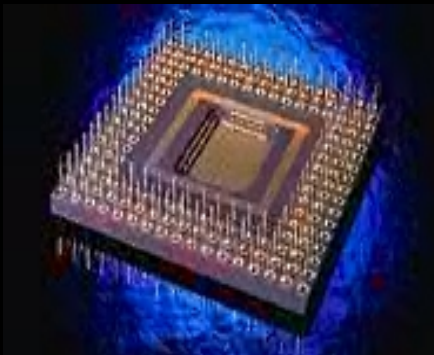
Threshold - seminal markers

- Entities on Demand
- Psycho-Ergonomic Interface
- Object Oriented Organelle Nodes
- Biological Metaphors in Computing
- Ubiquitous Computing Fabric Immersion



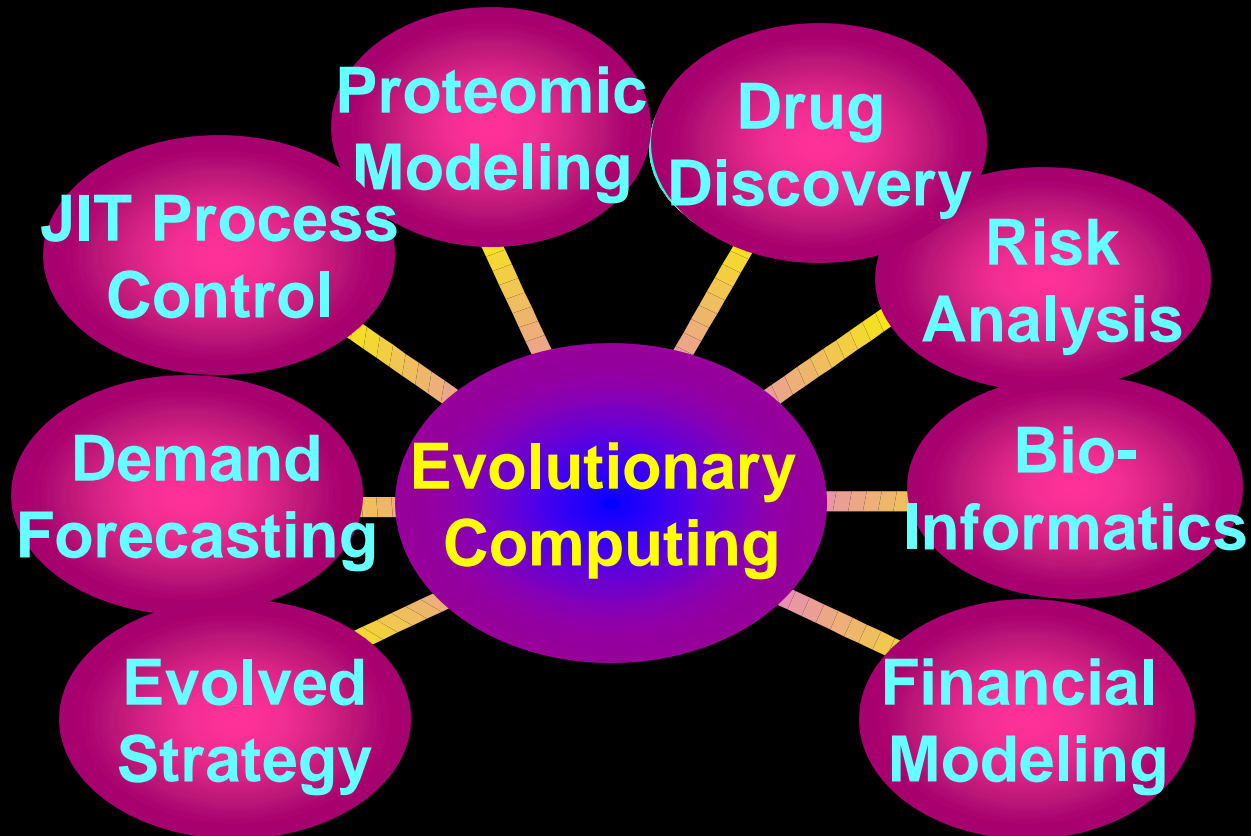
The New Economy - Virtual Asset Technologies

- “Gel” Ware
- Evolvable Systems
- Virtual “Intelligent Entites”
- Intelligent Agents and Agent Colonies
- Synthetic Sentience as a Strategic Resource



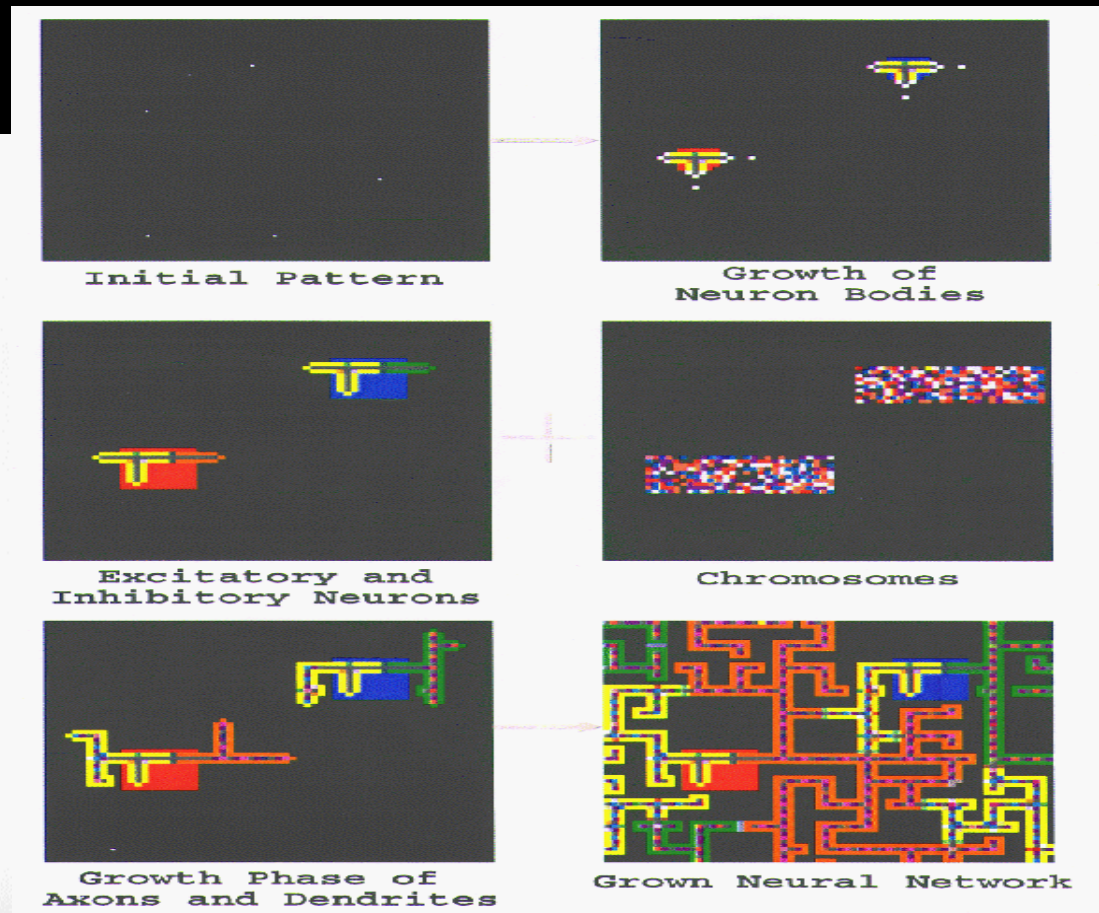
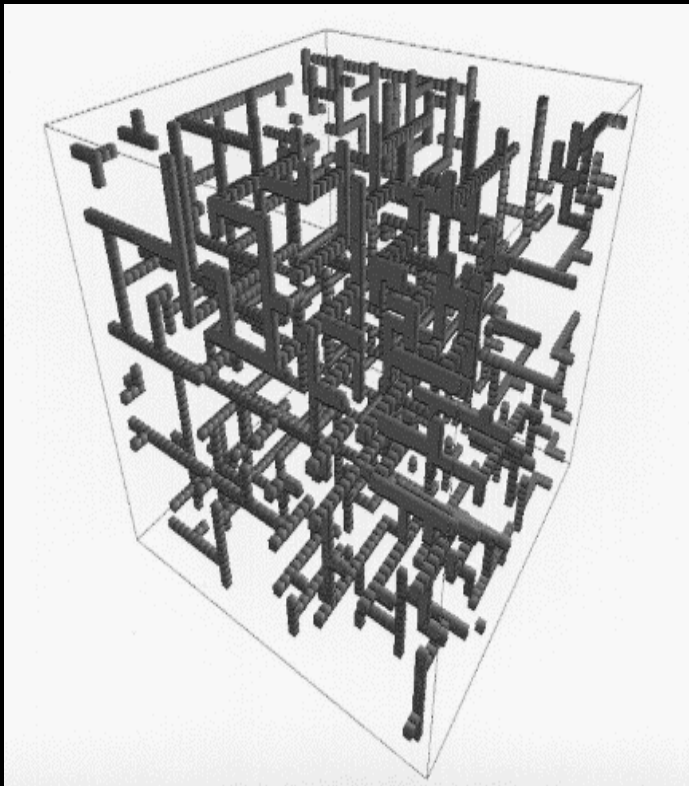
Convergence Node - Evolutionary Computing

- Biological Algorithms
- Scalable Computing Fabrics



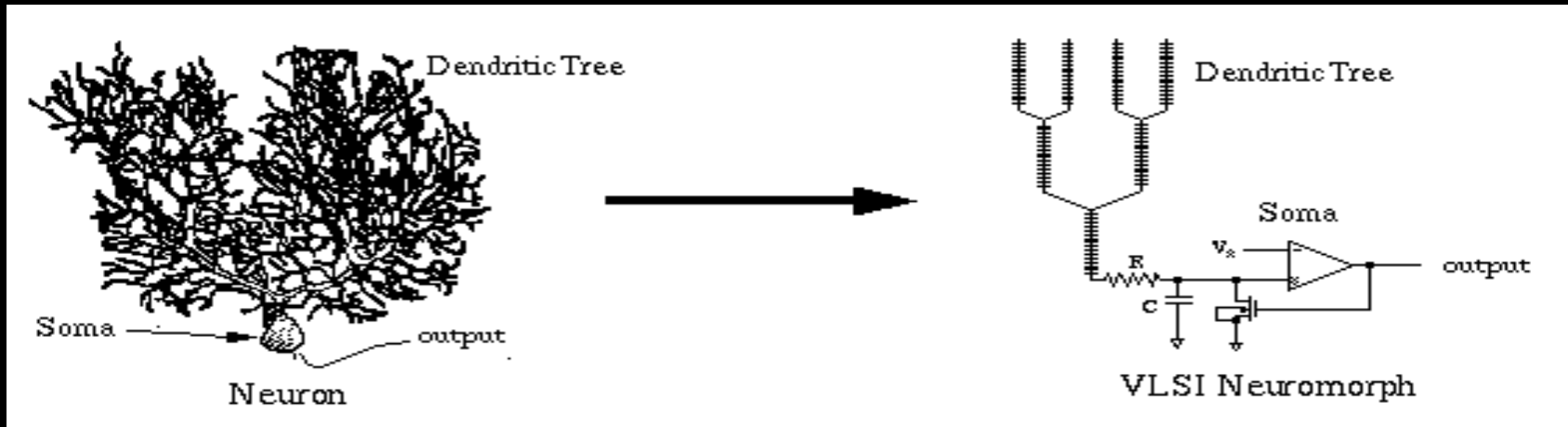
Self Evolving Synthetic Brains

- Evolutionary Computing
- Artificial Life



Artificial Life / Intelligence

- This is a model of a synthetic neuron

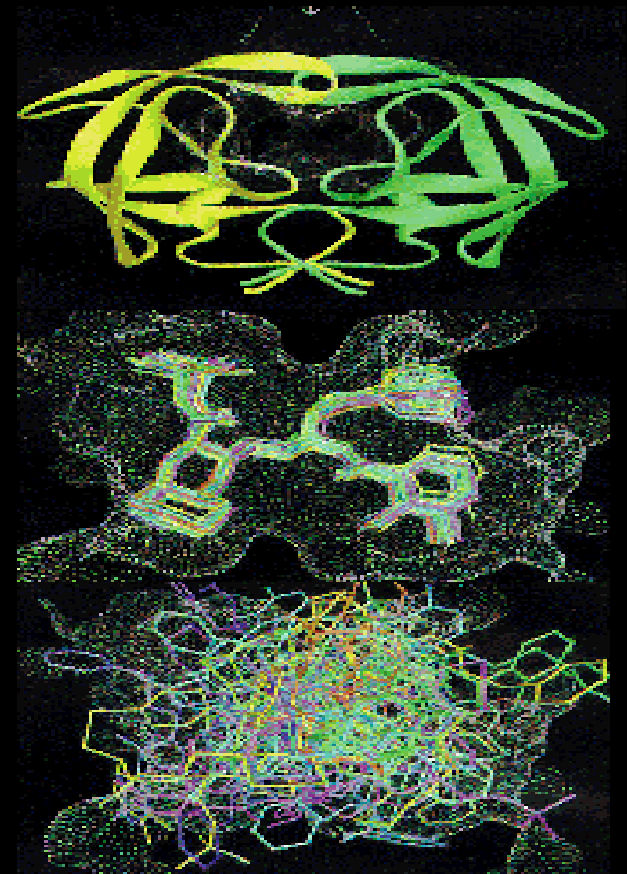


- This is an actual, self evolving synthetic neuralnet



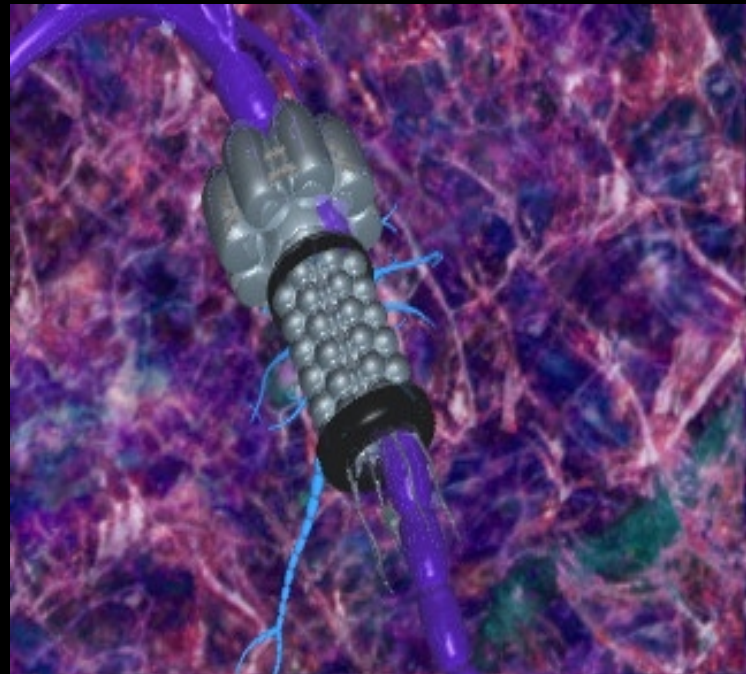
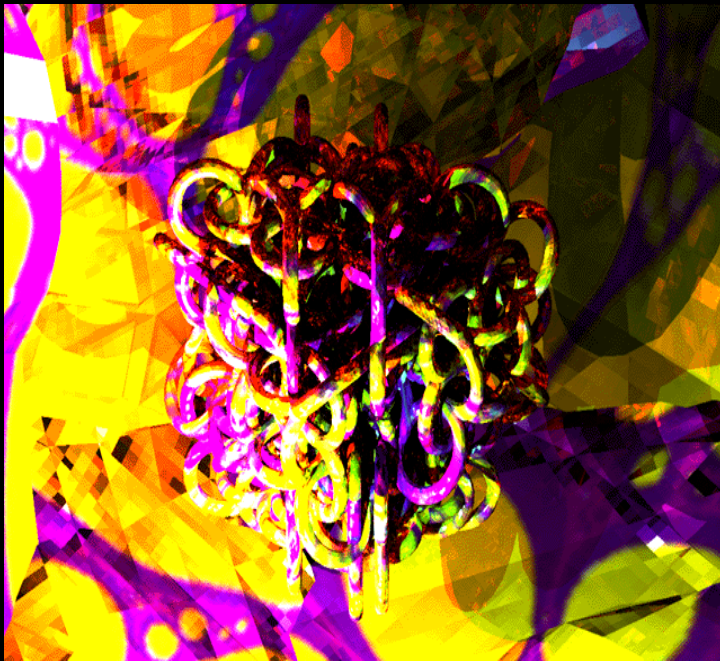
Nanobiology - the New Medicine

- Genetic Therapy
- Recombinant Proteomics
- Synthetic Proteins
- Artificial Organisms
- Cellular “Reconstruction”
- Technologically Accelerated Evolution

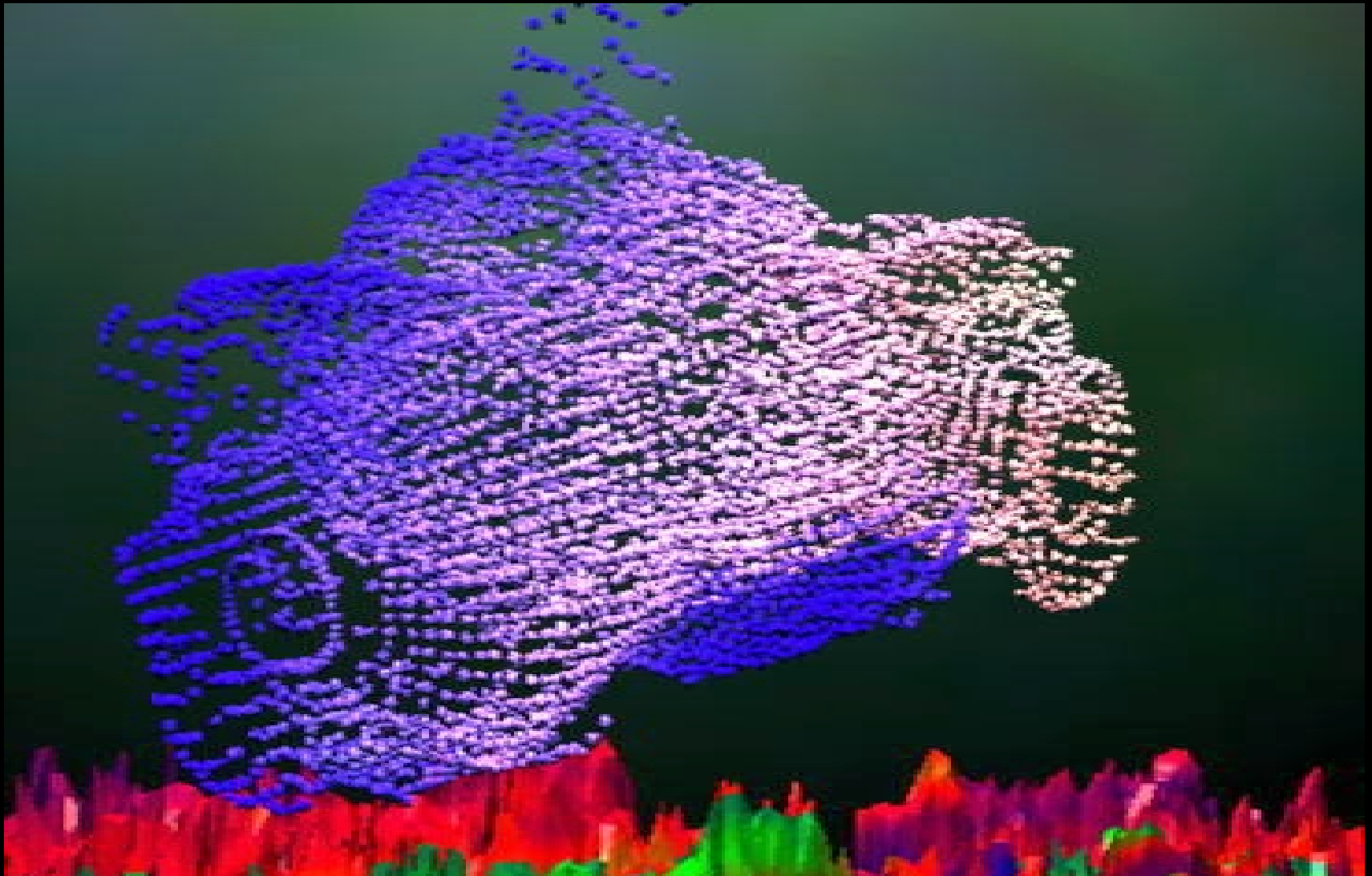


Cellular Cybernetics

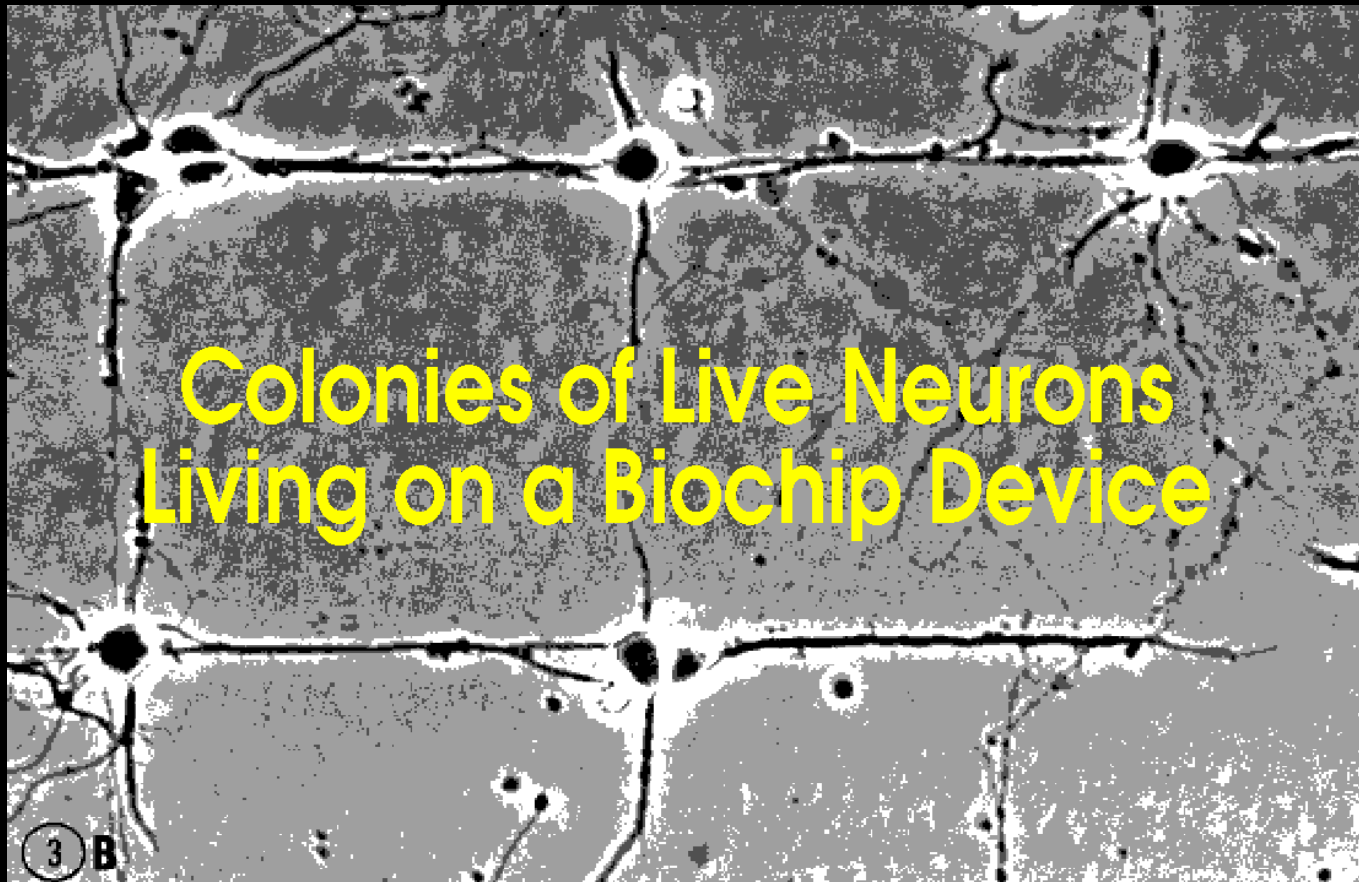
- Cellular Delivery Systems
- Corrective / Enhancement Biodevices



Hybrid Lifeforms - Self Organizing Systems

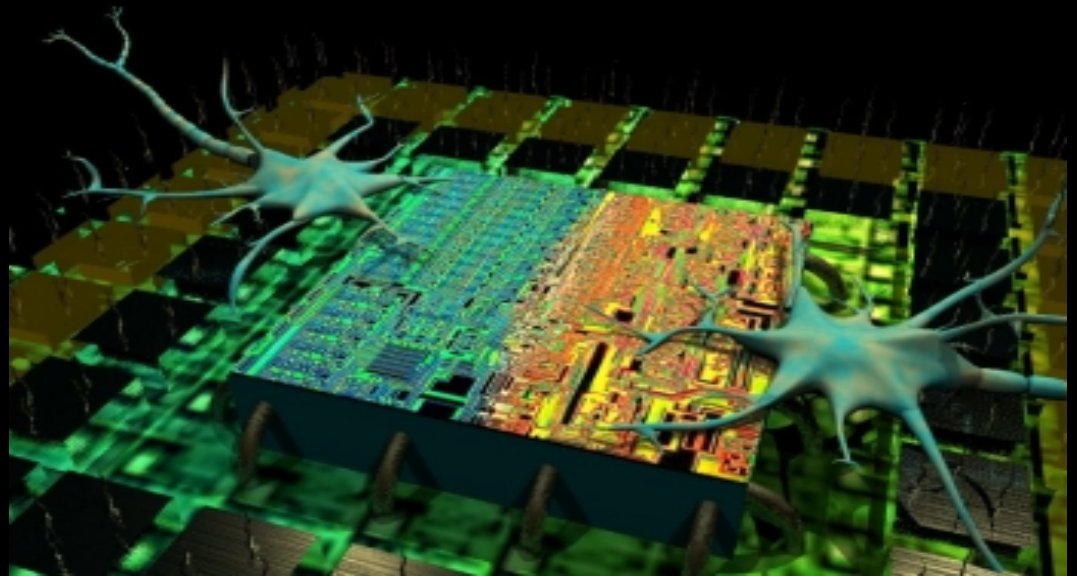
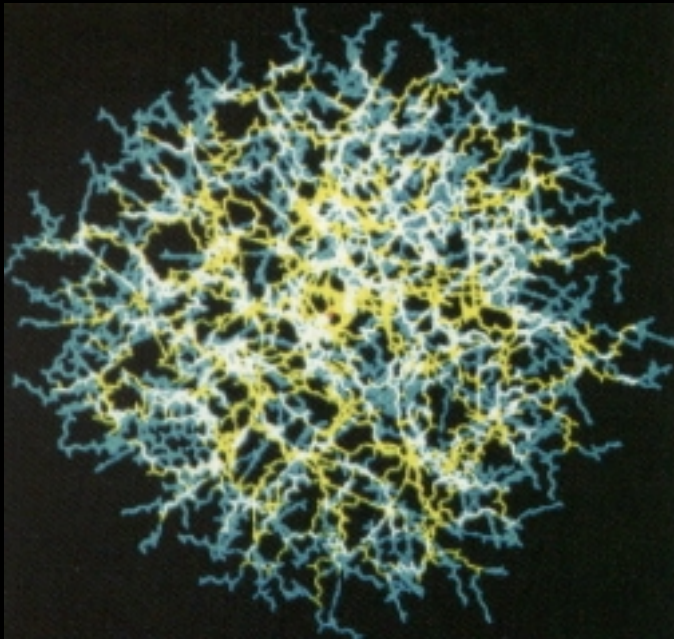


The New Frontier - Organic Merges with Synthetic



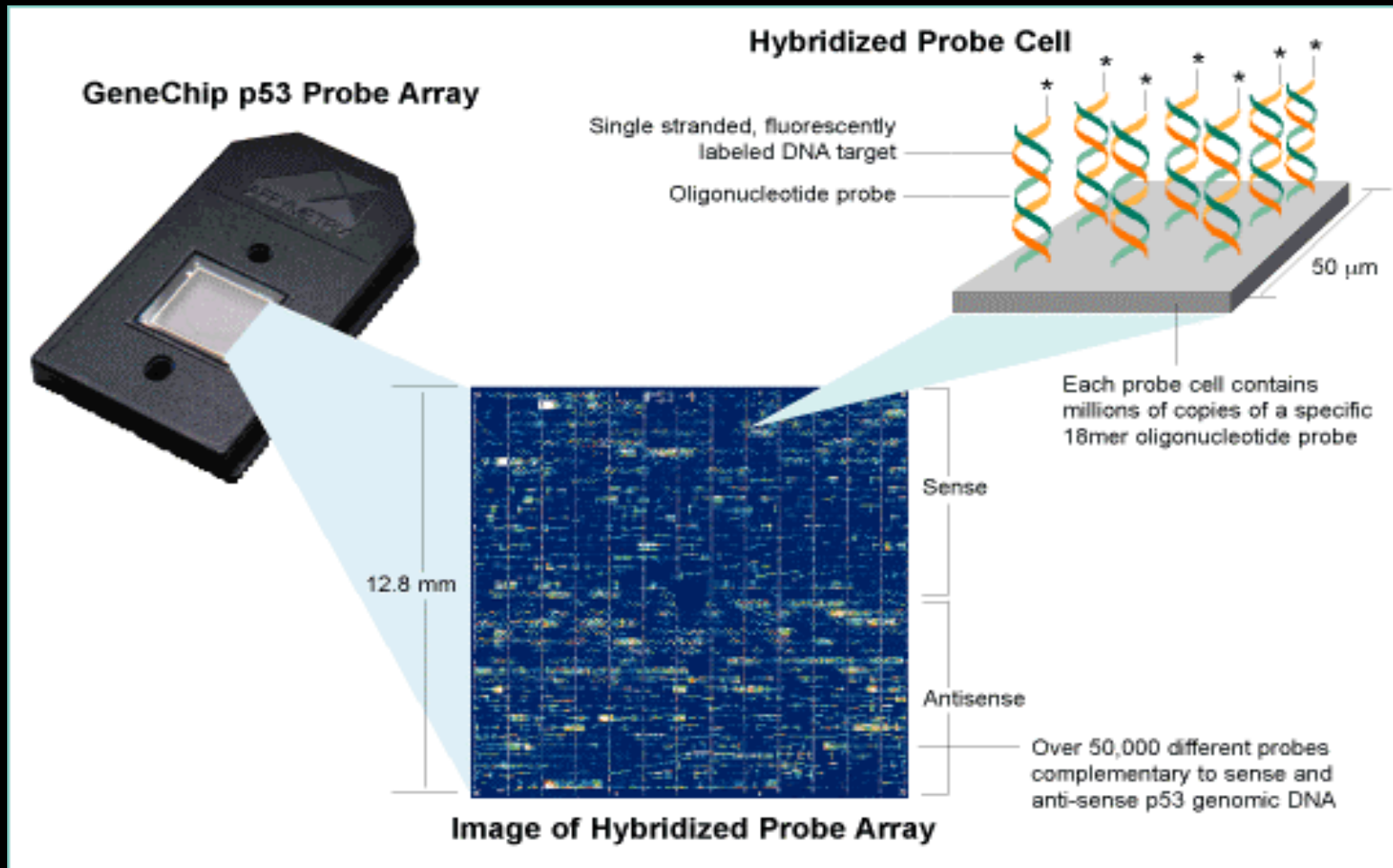
Life Sciences - Re-Engineering of Life Itself

- Implantable Integrated Biodevices
- Bio-engineered Tissue, Organs, Organisms
- Synthetic Recombinant DNA - Genopharmacology

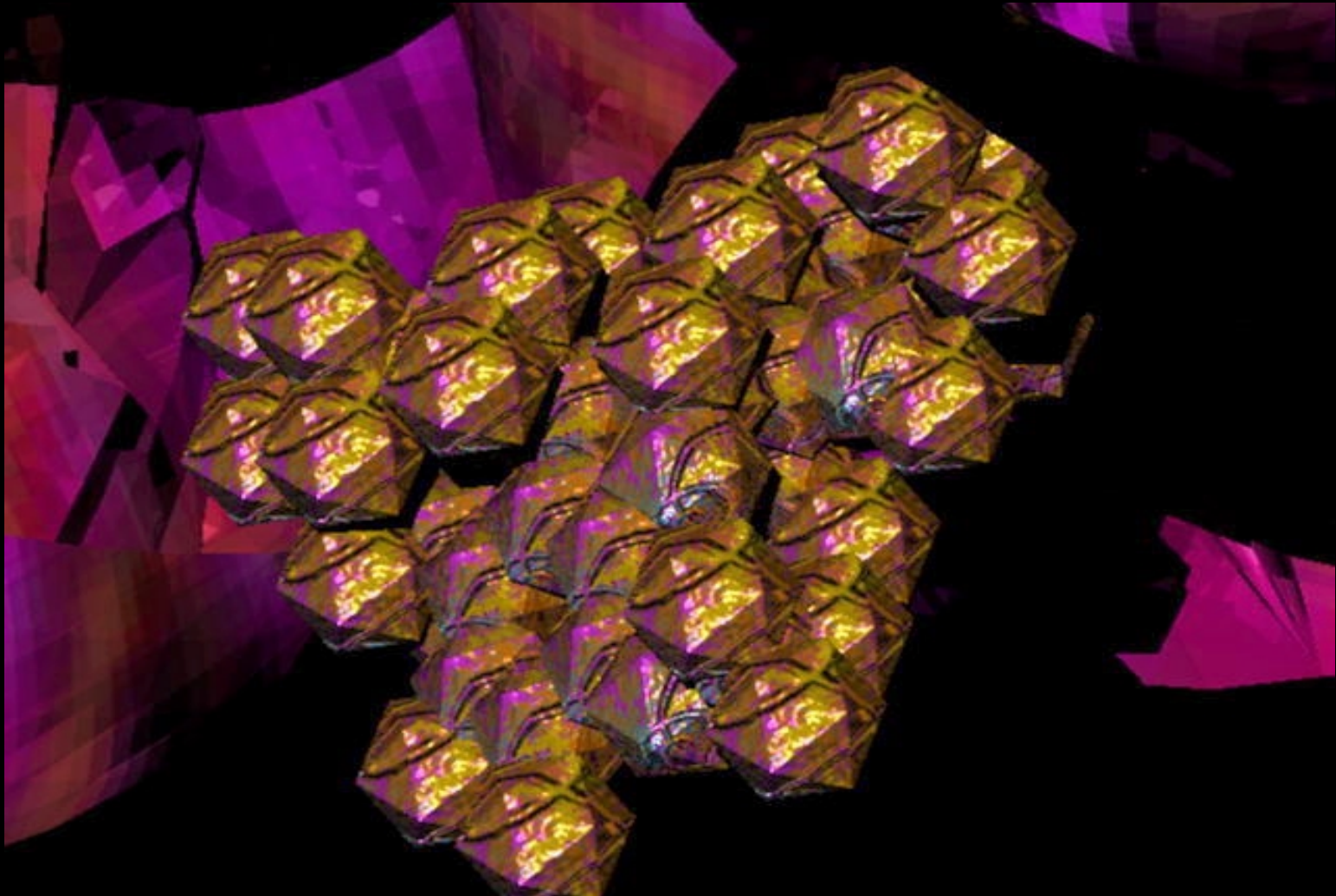


The Bio-engineering Revolution

- Affymetrix Genechip Example

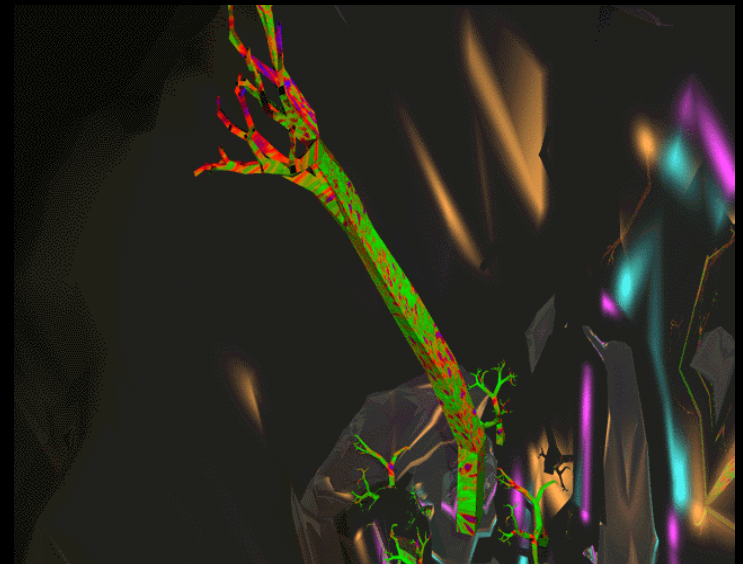
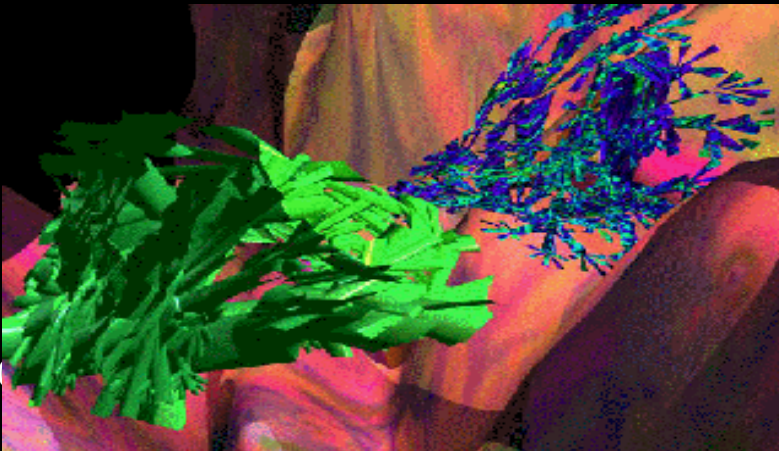


Lifeforms on Demand - the Next Emergent Process Deliverable



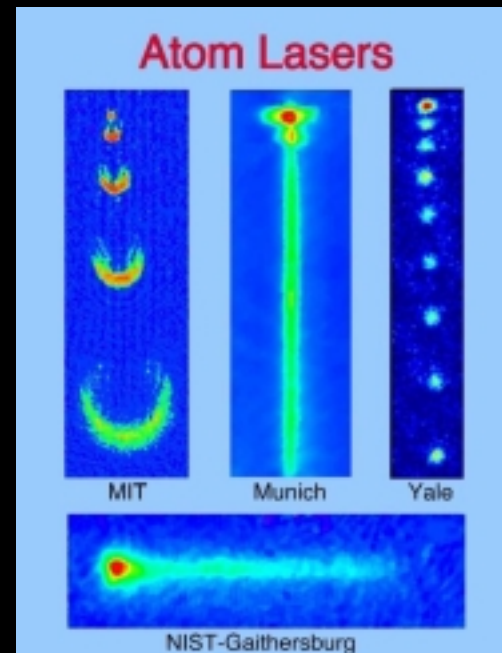
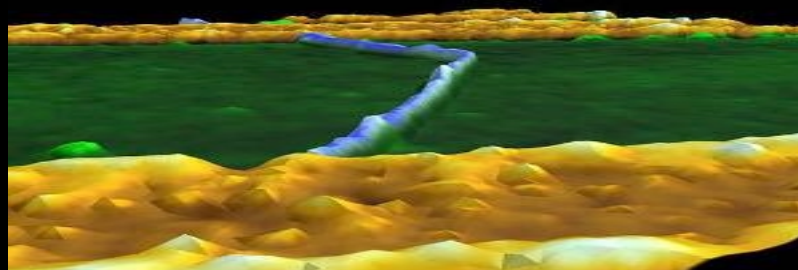
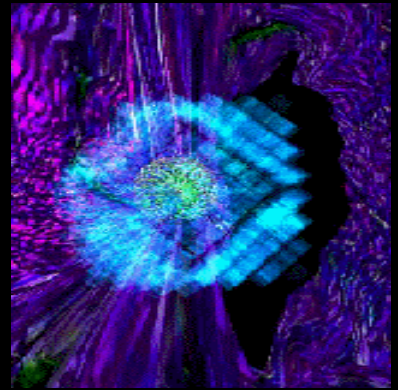
Most Important Key Features of Nanotechnology

- It is not a thing, a widget, or “tiny machines”
- It is a collection of molecular scale Manufacturing Systems
- Gateway to an Entire New Industrial Infrastructure

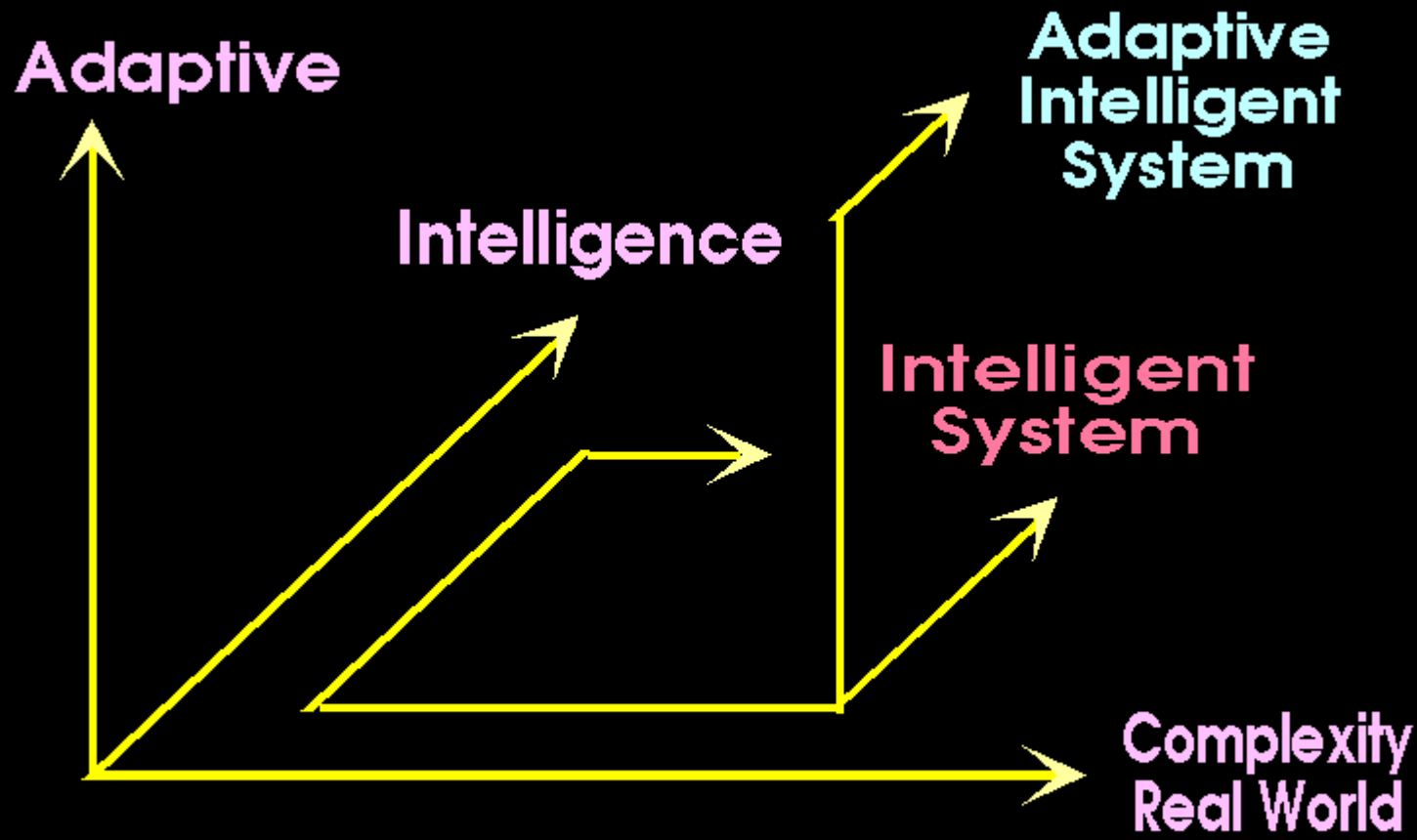


The Emergent NanoEconomy

- Moore's 1st Law is Not Relevant, Moore's 2nd Law is
- Economies of Scale, New Value Chain Models
- Systems Approach to an Emergent Industrial Infrastructure
- Enabling Access to New Markets that Could Not Exist Without Nanotechnology

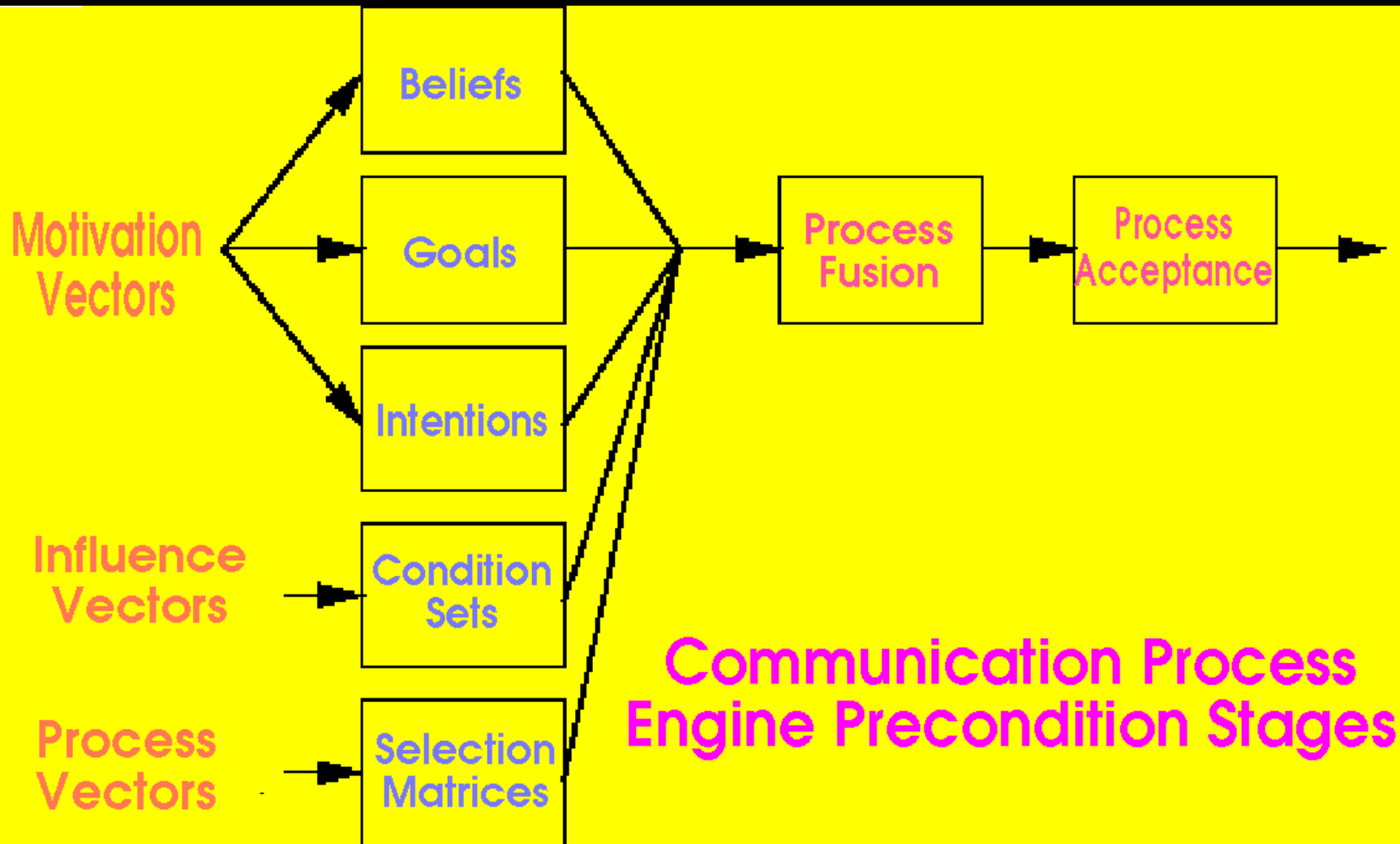


Ubiquitous Distributed Adaptive Intelligence Resources

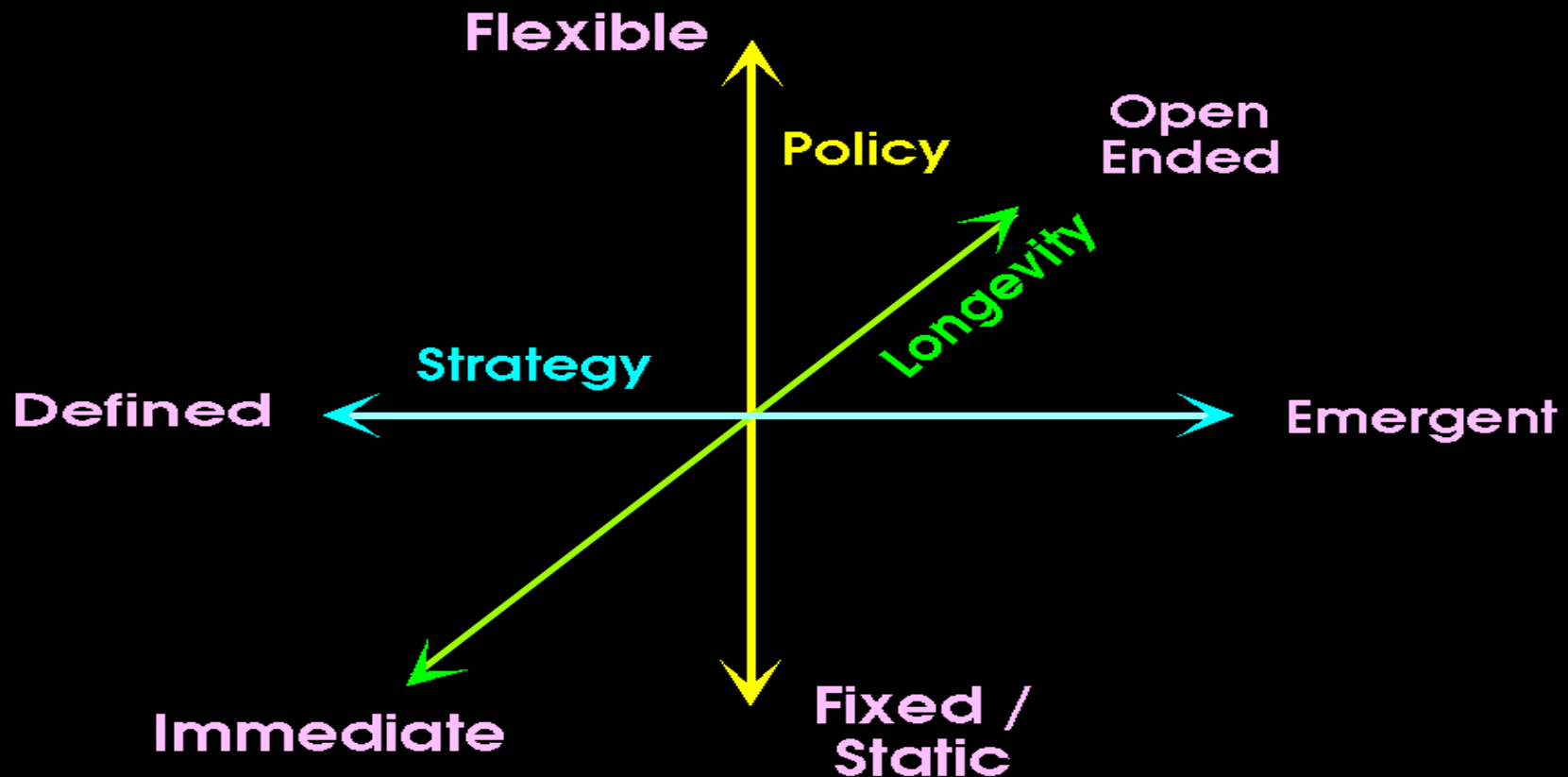


Adaptive Intelligent System Process Model

Artificially Enhanced Complexity Management - Process Control



Knowledge Harvesting - Primary Resource Value Chain

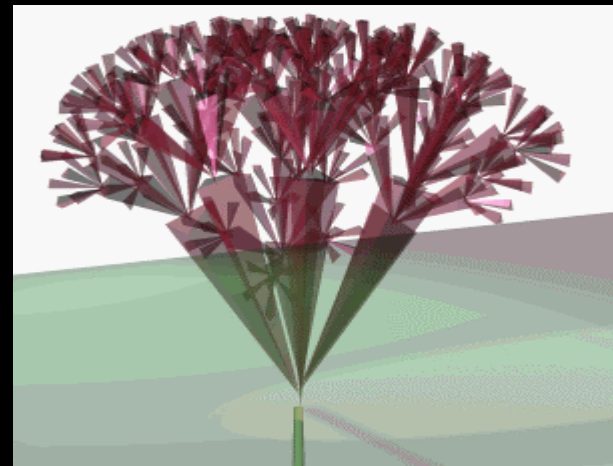
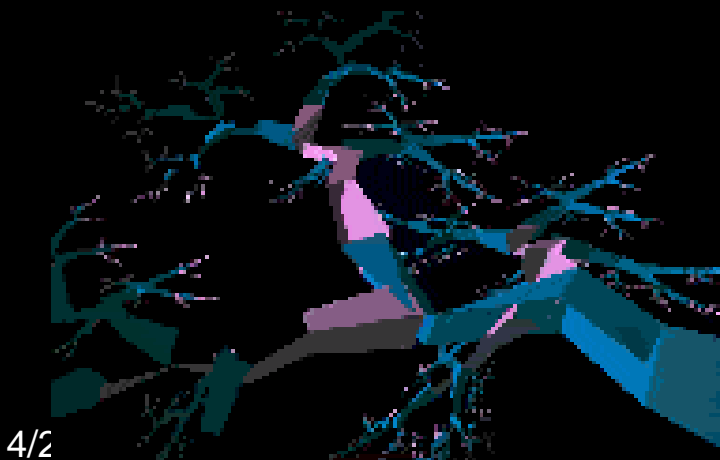


Contextual Cognition Process Vectors

Virtual Commodity Assets

Attributes and Considerations

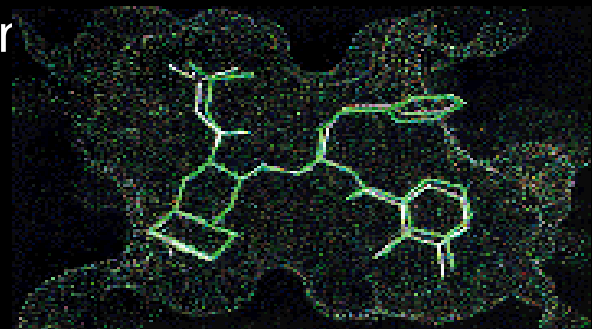
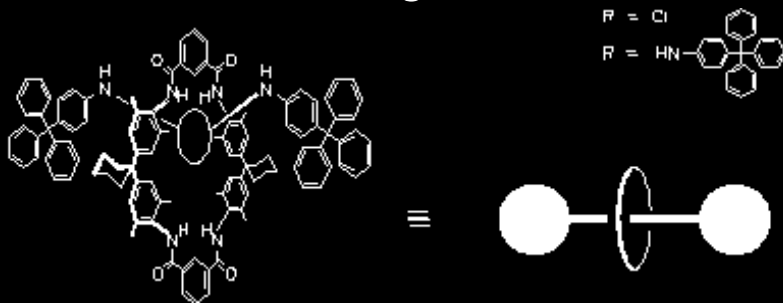
- Process Deliverables
- Access Portals & Computing Fabrics
- Distributed Knowledge & Intelligences
- Fiduciary Carrying Capacity of “VCA”



Convergence Syndrome Outcome



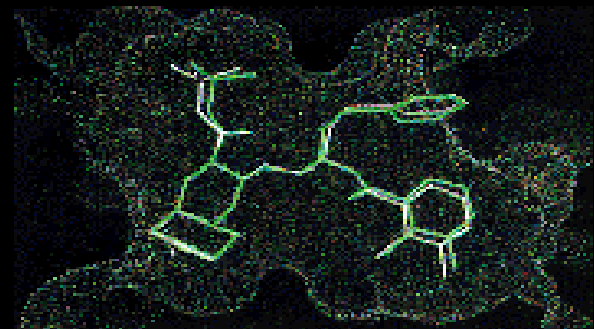
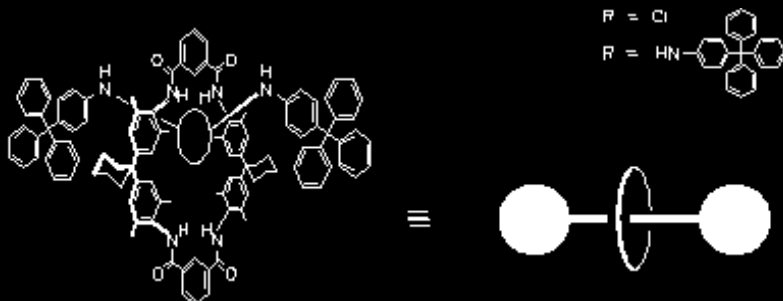
- As a process node embedded within the eventstream of our collective socio-economic, anthropological, and biophysical evolution, we begin first by spawning various synthetic entities. These become synergistically co-dependant organelle sub-components of an evermore complex, telecommunications centric process brokeraging infrastructure upon which the economic engines of our current civilization



Convergence Syndrome Outcome



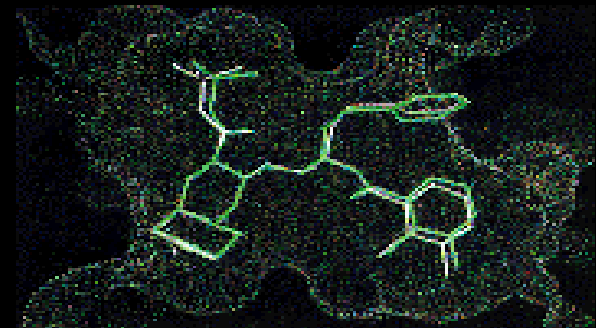
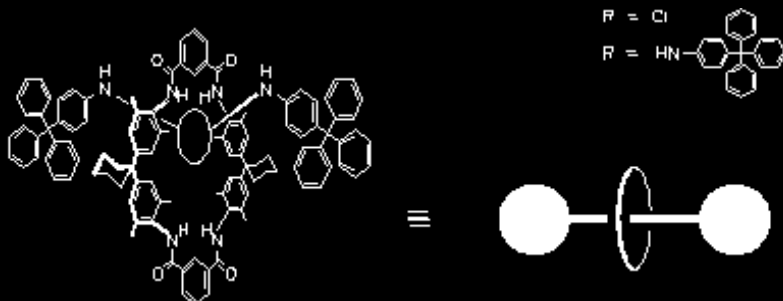
- Self organizing networks, process elements, and molecular substructures become the core organelles for synthetic brain engines, which in turn become the “physical” components for enabling synthetic sentience rendering as a process deliverable, enmeshed into a functionality matrix of symbiotic co-existence.



Convergence Syndrome Outcome



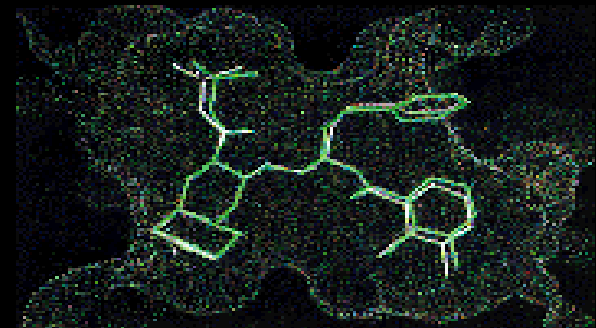
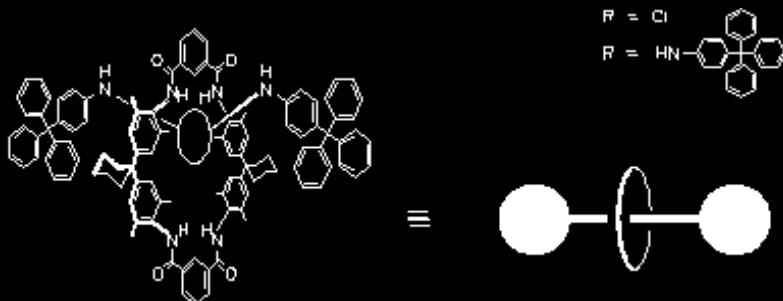
- Synthetic brain engines, which themselves are facilitated as nano-manufactured synthetic organelle components, become interconnected into the ubiquitous process brokeraging operational ecology.



Convergence Syndrome Outcome



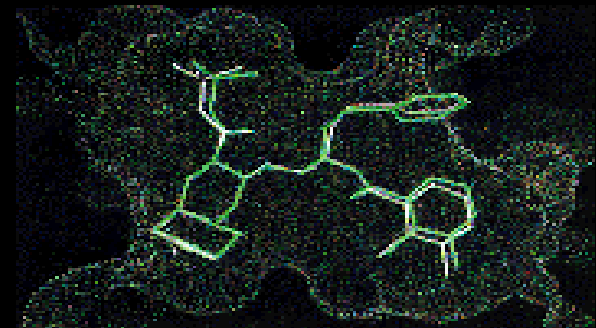
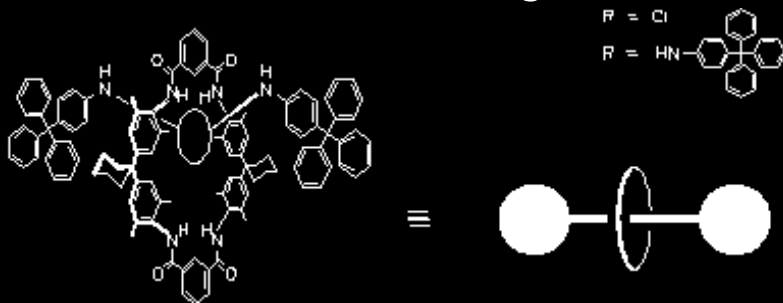
- Tangible, hard asset based commodity driven economic systems become supplanted by a virtual asset based economic ecology, in which valuation is measured less by ownership of physical things, more by access to processes. Synthetic sentience, and “tele-existence streaming” for on demand nano-assembly, become indices of valuation.



Convergence Syndrome Outcome



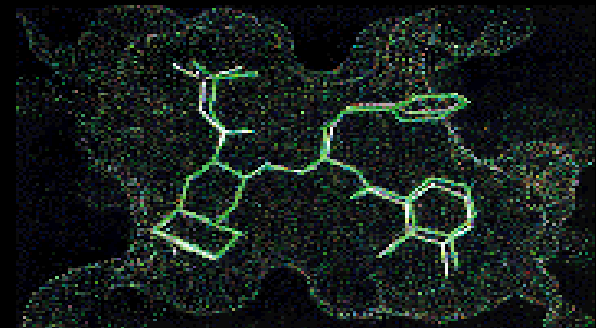
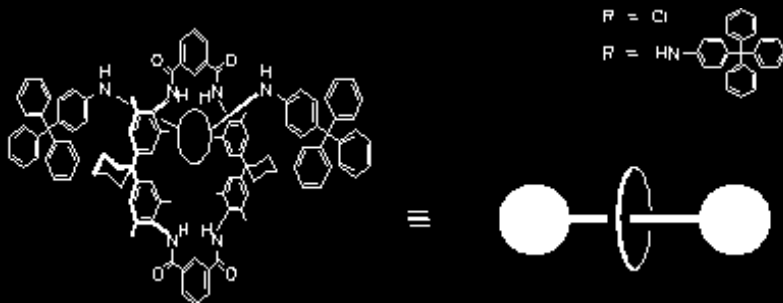
- Our collective development and deployment of complex metasystems of artificial entities and synthetic lifeforms, and acceptance of such becomes the “culture norm” of the near future. This is in fact the precursory developmental increment, as an evolutionary enabling threshold to communication with alternative intelligences, virtual and real.



Convergence Syndrome Outcome

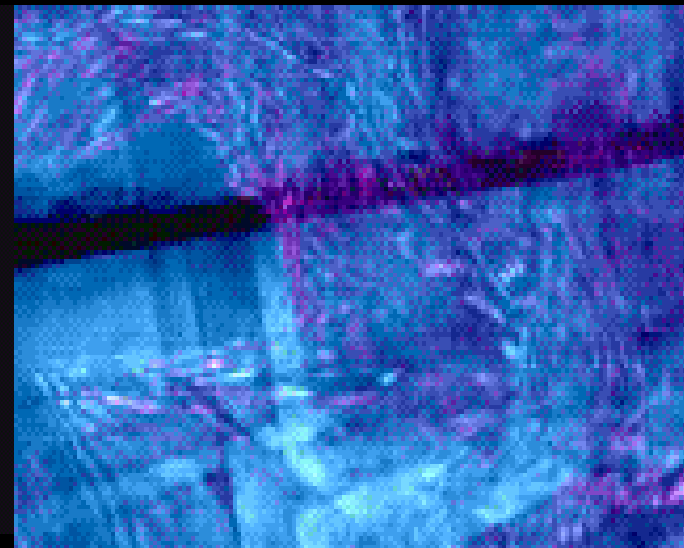
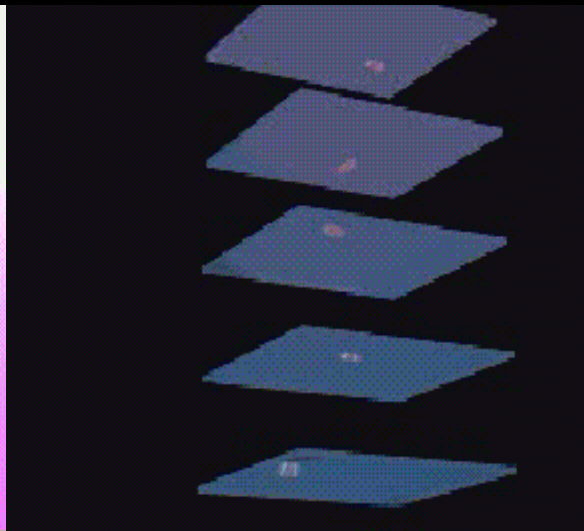
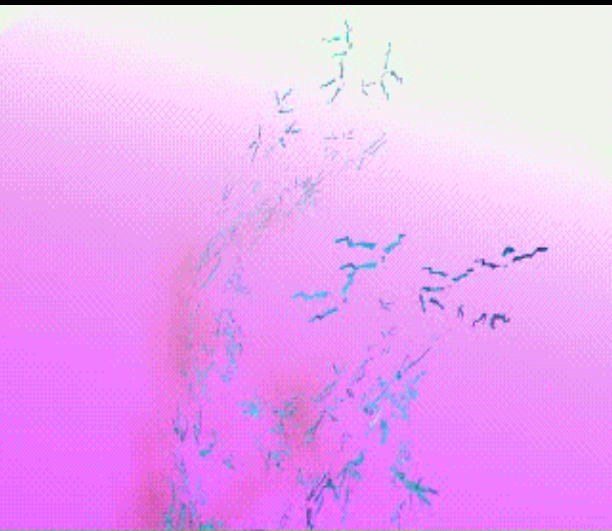


- The next evolutionary developmental increment will be access to the quantum realm, as a byproduct of applied nanotechnology. This is the enabling threshold to hybrid forms of consciousness on a mass scale, the evolution of the “empathic web”.



Convergence Outcome - Life is Redefined

- Biological Metaphors in Computing
- Immersion into the Ubiquitous Fabric
- Bioengineering - Life Itself Redefined



The Big Picture

Synthetically Enhanced Evolution

Intelligent Materials - Nanotechnology

Artificial Life and Intelligences

Self Evolving - Self Modifying Systems

Ubiquitous Transactional Environments

